

## PHYTOCHEMICAL ANALYSIS AND ANTIMICROBIAL ACTIVITY OF THE METHANOL LEAF EXTRACT OF *LUFFA CYLINDRICA* ON CERTAIN PATHOGENIC MICROBES.

Ezea Charity Chinasa<sup>1\*</sup>, Emerenini Ifunanya Lyndar<sup>1</sup>, Anowi Fredrick Chinedu<sup>1</sup>, Ifebi Hope Morris<sup>1</sup>, Ugwu Patience Ngozi<sup>2</sup>, Inya-Agha Stella Ifeoma<sup>2</sup> and Inya-Agha Somtochukwu Obiahu<sup>3</sup>

<sup>1</sup>Department of Pharmacognosy and Traditional Medicine, Faculty of Pharmaceutical Sciences, Nnamdi Azikiwe University, Awka, Anambra State, Nigeria.

<sup>2</sup>Department of Pharmacognosy and Environmental Medicine, Faculty of Pharmaceutical Sciences, University of Nigeria, Nsukka, Enugu-State, Nigeria.

<sup>3</sup>Department of Environmental Management and Control, Faculty of Environmental Sciences, University of Nigeria, Enugu-Campus, Enugu State, Nigeria.

Article Received on  
24 July 2017,

Revised on 14 August 2017,  
Accepted on 04 Sep. 2017

DOI: 10.20959/wjpr201711-9575

### \*Corresponding Author

**Dr. Ezea Charity Chinasa**

Department of  
Pharmacognosy and  
Traditional Medicine,  
Faculty of Pharmaceutical  
Sciences, Nnamdi Azikiwe  
University, Awka, Anambra  
State, Nigeria.

### ABSTRACT

The attention of the pharmaceutical scientists has been drawn to studies on the potential antimicrobial activities of plant derived substances, an untapped source of antimicrobials which are used in traditional medicine in different settings. This led to the study of the phytochemical analysis and antimicrobial activity of the methanol leaf extract of *Luffa cylindrica* on certain pathogenic microbes: *Escherichia coli*, *Pseudomonas aeruginosa*, *Staphylococcus aureus*, *Salmonella typhi*, *Candida albicans*, *Aspergillus niger*, which were isolated from the laboratory benches and toilet handles of the Faculty of Pharmaceutical Sciences, Nnamdi Azikiwe University Awka. The percentage Ash value was determined to be 2.3%. Microscopic evaluation of the plant showed specific cellular structures like the parenchyma, oxalate crystals, epidermal hairs and stomata. *S. aureus*,

*S. typhi*, *P. aeruginosa* and *C. albicans* were susceptible to the methanol leaf extract of *L. cylindrica*, with the exception of *E. coli* and *A. niger* which were resistant to the methanol extract. The phytochemical compounds present are Flavonoids, Alkaloids, Saponins,

Anthraquinone, Terpenoids, Steroids. Overall, among the pathogenic microbes used, *E. coli* and *A. niger* were resistant to the effect of the leaf extract of *Luffa cylindrica*.

**KEYWORDS:** *Luffa cylindrica*; Phytochemical constituents; Pathogenic microbes.

## INTRODUCTION

Nature has been the first resort in the past in the discovery of interesting compounds to fight diseases. The traditional medicine sector has become an important source of health care, especially in rural and tribal areas of the country. About 80% of the people in Africa use traditional medicine in maintaining health and wellness (WHO, 2015). The use of herbs & nutrition (diet, vitamins and minerals) offers many advantages over conventional medicine. Although taking a little longer to act, it is far gentler on the body and the overall result is more holistic because the whole body is treated instead of just the symptoms. If disease represents an imbalance in the body, then natural medicine is about correcting that imbalance in a sustainable way (Tam, 2010).

*Luffa cylindrica* Mill (*Cucurbitaceae*) is a plant from the cucumber family, grown for its multipurpose fruit in many tropical countries. It is an annual climbing or trailing herbaceous species that can be 15 m long (Grin, 2000). It is an annual climbing or trailing herbaceous species that can be 15 m long. The luffa fruit is a cylindrical, fusiform, smooth, and dehiscent capsule, 20-50 cm long x 6-10 cm broad, with has a characteristic fibrous mesocarp. The leaves are alternate, large (6-25 cm x 6-27 cm) ovate and dark green. The seeds are numerous, dull black, elliptic-ovoid, 10-12 mm long x 6-8 mm broad (Achigan-Dako *et al.*, 2011; Floras, 2014).

When the fruit becomes old and dry the endocarp becomes a persistent fibrous vascular network which is used in various ways. A major use is as a sponge for washing and scrubbing utensils as well as the human body. It is also used for the manufacture of hats, insoles of shoes, car-wipers, pot-holders, table-mats, door and bath-mats, sandals and gloves. The fibre has also been used for its shock and sound absorbing properties, for instance in helmets and armoured vehicles, and as a filter in engines. In Ghana the dry fibre is used to filter water and palm wine. In Central Africa it is used to brush clothes. Fungal biosorbents immobilized on *Luffa cylindrica* sponges have been used for the biosorption of heavy metals from olive oil mill wastewater and other wastewaters. The young fruit is eaten fresh or cooked as a vegetable, but it has to be picked before the fibrous vascular bundles harden and before the

purging compounds develop. In Guinea and Côte d'Ivoire edible cultivars are grown. Edible forms have also been developed in India and the Philippines where the plant is commonly cultivated. In India and China a type of curry is prepared with the fruit which is peeled, sliced and fried. In Japan the fruits are eaten fresh or sliced and dried to be eaten later. The leaves are also eaten as a vegetable. The roasted seeds are edible and contain an edible oil. The oil has been used in the United States in soap manufacture. The bitter and toxic seedcake is unsuitable as feed for cattle, but can be used as fertilizer given that it is rich in Nitrogen and Phosphorus. The fruits and leaves are browsed by goats. Bees feed on the flowers. (Bal, *et al.*, 2004).

In traditional African medicine pulp of the whole plant is used as a suppository against constipation. Root preparations are taken for the treatment of constipation and as a diuretic. In Gabon a root preparation is used as remedy of nose cancer. In DR Congo a decoction of the roots and leaves is recorded to be drunk or used in an enema as an abortifacient, but in Tanzania a root decoction and leaf sap are recorded to be drunk to reduce the danger of abortion. The leaves are used to promote wound healing and to maturate abscesses. In Togo leaf preparations are applied on oedemas and taken for the treatment of malaria. In the Central African Republic ground leaves are introduced rectally for the treatment of enterobiasis. In Congo the leaf juice is considered to be effective against filaria and an aqueous maceration of fresh leaves is taken for the treatment of whooping cough. In Rwanda the leaves are pounded with water and the sap is taken for the treatment of stomach-ache. In Uganda leaf preparations are used to facilitate childbirth. Zulu people in South Africa take a leaf decoction to treat stomach-ache. The fruit is used in Guinea on tumours and swellings, and the fruit pulp is used in Guinea and Nigeria as an emollient. The fruit sap is taken as a strong purgative. The seeds are credited with emollient and anthelmintic properties. They are also emetic and cathartic. The seed oil is used for the treatment of skin problems. Unripe fruits have been used as fish poison. (Neuwinger, 2000). *Luffa cylindrica* has been reported to possess both medicinal and nutritional properties. Its seeds have been used in the treatment of asthma, sinusitis and fever (Nagao *et al.*, 1991). It also reported that abortifacient proteins (Ng *et al.*, 1991) such as luffaculin which possess ribosome-inhibiting properties on the replication of HIV infected lymphocyte and phagocyte cells explain its potential as a therapeutic agent for AIDS (McGrath *et al.*, 1989). It has been reported that juice extracted from the stem has been used in the treatment of respiratory disorders and the seed has emetic action (Bailey, 1989). As part of our objective investigation of this on the antimicrobial

activity of the methanol leaf extract of *Luffa cylindrica* on certain pathogenic microbes isolated from the laboratory benches and toilet handles of the Faculty of Pharmaceutical Sciences, Nnamdi Azikiwe University Awka.

## MATERIALS AND METHODS

### Materials

#### Plant materials

The plant sample *Luffa cylindrica* (leaves) was collected at Agulu, Anambra state of Nigeria and was authenticated by Mr. A.O Ozioko of International Center for Ethnomedicine and Drug Development (InterCEDD), Nsukka, Enugu State, Nigeria. Voucher samples were prepared and deposited in the Herbarium of the Department of Pharmacognosy and Traditional Medicine, Nnamdi Azikiwe University, Awka, with voucher no. PCG/474/A/049, for reference. The plant was then washed and dried under the shade after which it was milled into fine powder with a mechanical grinder. The powdered plant was stored for future use.

#### Culture media and other reagents

Muller Hinton Agar (Titan Biotech Ltd; Rajasthan India), Sabouraud's dextrose agar, Nutrient Broth (LabM Ltd; United Kingdom), MacConkey Agar (Biotech Laboratories Pvt Ltd; Mumbai India), Mannitol Salt Agar, Cetrimide Agar, Salmonella Shigella Agar (Titan Biotech Ltd; Rajasthan India), Ethanol Absolute (Gunagdong Guandus Chemical Factory; China), Buffered peptone water (HiMedia Laboratories Pvt Ltd ; Mumbai India), Swab stick, Inoculating loop, Bijou bottles, Disinfectant, Sodium hypochlorite, Distilled water, Normal saline

#### Reagents and equipment

Freshly prepared plasma, methyl red, marker, slides, crystal violet, tap water, sterile distilled water, iodine solution, ethanol, safranin, light microscope, hydrogen peroxide, ethanol, petri-dishes, test tubes, DMSO, oxidase reagent, Freezer, incubator, Bunsen burner, autoclave, hot air oven, mixer, syringes

**Phytochemicals:** 1% HCl, Mayer's reagent, Wagner's reagent, Ferric chloride solution ( $\text{FeCl}_3$ ), 10% lead acetate solution, distilled water, concentrated sulphuric acid ( $\text{H}_2\text{SO}_4$ ), chloroform, distilled water, aqueous ammonia, acetic acid, Fehling reagent.

**Ash determination:** Fume cupboard, crucible, weighing balance (Adventurer Ohaus USA).

**Microscopy:** Chloral hydrate solution, camera lucida microscope, glass slides, immersion oil

## **Method**

### **Preparation of methanol extract**

One kilogram (1kg) of the leave powder was cold macerated in one liter of methanol in two maceration containers for 48 hours. At the end of the extraction, the suspension was filtered with No. 1 filter paper (Whatman, Maidstone, England) which had a white muslin cloth over the funnel that contained the filter paper. The filtrate was concentrated over a hot water bath regulated at 50°C and the dried filtrate was weighed and stored at 4°C for further use.

### **Preparation of microorganisms for experiment**

For the culturing of the organisms, 10 samples were collected from laboratory working benches and toilet handles of the Faculty of Pharmaceutical Sciences, Nnamdi Azikiwe University Awka by using sterile swabsticks. The organisms were cultured at 37°C for 24 hrs in a nutrient broth which was prepared according to the manufacturers directions. After the 24hrs, the microbial broth was used in subculturing for the required organisms. For use in experiments, the organisms were sub-cultured in nutrient broth and nutrient agar (Oxoid Ltd.) while diagnostic sensitivity test agar (DST) (Oxoid Ltd.) was used in antibiotic sensitivity testing.

### **Phytochemical analysis**

The following phytochemical analysis were conducted according to the description on Trease and Evans (2009) and Akinjogunla, *et al.*, (2010).

### **Sample culturing**

For the culturing of the organisms, 10 samples were collected from laboratory working benches and toilet handles of the Faculty of Pharmaceutical Sciences, Nnamdi Azikiwe University Awka by using sterile swabsticks. The organisms were cultured at 37°C for 24 hrs in a nutrient broth which was prepared according to the manufacturers directions. After the 24hrs, the microbial broth was used in subculturing for the required organisms.

## **CULTIVATION AND ISOLATION OF DESIRED MICROORGANISMS**

### **Cultivation of *Salmonella typhi***

The glass wares used were sterilized using the hot oven at 150°C for 1 hr; the working slab was also disinfected with sodium hypochlorite. Then the required amount of *Salmonella*

*Shigella* Agar (SSA) was prepared according to the manufacturer's instructions and transferred to the sterile petri dishes under aseptic conditions after which it was allowed to cool. The agar plates were streaked with the cultured broth using a sterile swab stick and incubated upside down in an incubator at 37°C for 24hours.

#### **Cultivation of *Escherichia coli***

The glass wares used were sterilized using the hot oven at 150°C for 1 hr; the working slab was also disinfected with sodium hypochlorite. Then the required amount of MacConkey Agar was prepared according to the manufacturer's instructions and transferred to the sterile petri dishes under aseptic conditions after which it was allowed to cool. The agar plates were streaked with the cultured broth using a sterile swab stick and incubated upside down in an incubator at 37°C for 24hours.

#### **Cultivation of *Staphylococcus aureus***

The glass wares used were sterilized using the hot oven at 150°C for 1 hr; the working slab was also disinfected with sodium hypochlorite. Then the required amount of Mannitol salt Agar was prepared according to the manufacturer's instructions and transferred to the sterile petri dishes under aseptic conditions after which it was allowed to cool. The agar plates were streaked with the cultured broth using a sterile swab stick and incubated upside down in an incubator at 37°C for 24hours.

#### **Cultivation of *Pseudomonas aeruginosa***

The glass wares used were sterilized using the hot oven at 150°C for 1 hr; the working slab was also disinfected with sodium hypochlorite. Then the required amount of Cetrimide Agar was prepared according to the manufacturer's instructions and transferred to the sterile petri dishes under aseptic conditions after which it was allowed to cool. The agar plates were streaked with the cultured broth using a sterile swab stick and incubated upside down in an incubator at 37°C for 24hours.

#### **Isolation and Identification of *Salmonella typhi***

##### **Presumptive test**

The presence of black colonies on the SSA is indicative of *salmonella typhi* and this was used for further analysis.

**Gram stain**

The loop was sterilized by flaming to red hot and cooling. From the liquid culture, a loopful of culture was collected and fairly heavy smears were made in a circular manner on the slide. The slide was fixed by passing over Bunsen flame two or three times. The slide was flooded for 30 seconds with crystal violet and washed in tap water and excess water was drained off. The slide was flooded with iodine solution (mordant) for 1 minute. The slide was decolorized by adding ethanol drop wise on the tilted slide until all free colour (purple) has been removed, the slide was washed with water. Safranin was applied for 3 minutes. The slide was washed with water and air dried and immersion oil was dropped on the slide and covered with a slide cover and viewed under the microscope.

**Isolation and identification of *Escherichia coli*****Presumptive test**

The presence of reddish pink colonies on the MacConkey agar was presumptive for *E.coli*

**Catalase test**

The working slab was disinfected with sodium hypochlorite solution. A 3ml volume of hydrogen peroxide was poured into sterile test tubes, using a glass rod, a pink colony from the cultured plate was picked and transferred into the solution of hydrogen peroxide and the solution was checked for the presence of immediate bubbling.

**Isolation and Identification of *Staphylococcus aureus*****Presumptive test**

The presence of yellow colonies on Mannitol Salt Agar (MSA) was presumptive for *Staphylococcus aureus*.

**Gram stain**

The procedure for the gram stain that was used for *Salmonella typhi* was also used for the *Staphylococcus aureus*. The gram positive yellow colonies were further subjected to the following test for *Staphylococcus aureus*.

**Coagulase test**

The working slab was made aseptic by cleaning with disinfectant. Few drops of physiological saline were dropped on a clean slide and a colony of the organism was emulsified on the slide



using a sterile wire loop. A drop of plasma was dropped on the smear and mixed using an applicator stick, then clumping was checked for within 10 seconds.

### **Catalase test**

The procedure for the catalase test that was used for *E. coli* was also used for *Staphylococcus aureus*.

### **Isolation and identification of *Pseudomonas aeruginosa***

#### **Presumptive test**

The presence of green colonies on Cetrimide agar was presumptive for *Pseudomonas aeruginosa*.

#### **Oxidase test**

Two drops of oxidase reagent was placed on a piece of filter paper on a slide. With the edge of another slide, the green colonies were collected and smeared across the emulsified filter paper. The filter paper was observed and the results were recorded.

#### **Isolates purification and storage**

The isolated microorganisms were purified by preparing the required volume of their respective selective nutrient media according to the manufacturer's description and allowed to solidify. Then a single colony was picked from the plate and was emulsified in sterile water. This was streaked on the agar plates from side to side in a systematic fashion without digging into the surface. It was then incubated at 37°C for 24hours.

**Storage of isolates:** Double strength Muller Hinton agar was prepared into a bijou bottle to form an agar slant. Then the isolates were streaked on the agar in the properly labeled bottles and then incubated at 37°C for 24hours after which they were stored at 4°C for further use.

### **Fungi**

Two fungi were used for the studies; *Candida albicans* and *Aspergillus niger*. The fungi were obtained from already isolated micro organisms in the department of pharmaceutical microbiology, Nnamdi Azikiwe University, Awka.



**Antimicrobial activity of the plant extract****Determination of the minimum inhibitory concentration (MIC)****MIC against bacteria**

The concentrated plant extracts were reconstituted in 10% DMSO in concentration of 200 mg/mL. A two fold serial dilution was made to obtain concentrations of 100 mg/mL, 50 mg/mL, 25 mg/mL, 12.5 mg/mL, 6.25 mg/mL, 3.125 mg/mL and 1.563 mg/mL. The MIC determination was done as described below; 19 mL of the molten Mueller hington agar was mixed with 1mL of the plant extract dilutions in sterile petri dishes. It was allowed to solidify and a sterile wire loop was used to streak a loopful of the inoculum on the surface of the dried agar. The plates were then incubated in an inverted position at 37°C for 24 hours, after which the plates were observed for presence of colonies. These were done in duplicates of the plant extract against *E.coli*, *S. aureus*, *P. aeruginosa*, *S.typhi*.

**Antibacterial positive Control**

Ciprofloxacin was used as an antibacterial positive control against the four (4) bacterial. The IZD of ciprofloxacin was determined and the MIC of ciprofloxacin was extrapolated from a graph of IZD<sup>2</sup> against concentration C.

**MIC against fungi**

The concentrated plant extracts were reconstituted in 10% DMSO in concentration of 200 mg/mL. A two fold serial dilution was made to obtain concentrations of 100 mg/mL, 50 mg/mL, 25 mg/mL, 12.5 mg/mL, 6.25 mg/mL, 3.125 mg/mL and 1.563 mg/mL The MIC determination was done as described below; 19 mL of the molten Sabouraud's Dextrose Agar (SDA) was mixed with 1mL of the plant extract dilutions in sterile petri dishes. It was allowed to solidify and a sterile wire loop was used to streak a loopful of the inoculum on the surface of the dried agar. The plates were then incubated in an inverted position at 25° C for 48 hours, after which the plates were observed for presence of colonies.

**Antifungal Control**

Ketoconazole was used as an antifungal positive control against the two (2) fungi. The IZD of ketoconazole was determined with 3 concentrations and the MIC was extrapolated from the graph of IZD<sup>2</sup> against concentration

**Determination of Minimum Biocidal Concentration (MBC)**

The MIC plates showing no growth of visible colonies were used to determine the MBC. Disc were cut out from each plate with no visible growth and transferred into a test tube containing fresh medium of double strength nutrient broth. The tubes were incubated at 37°C for 48 hours after which the test tubes will be observed for the presence of turbidity.

**Ash value determination**

A crucible was heated, cooled and weighed and 2g of the powdered plant leaves was added to the crucible in an even layer. This was heated gently in a fume compound until all the moisture has been driven out and the material was completely charred. The flame was gradually increased until (450°C) until the residue became white indicating that it is free from carbon. The crucible was cooled and weighed. The process of heating and cooling was continued until a constant weight was achieved. The final weight of the crucible containing the ash was taken and the ash value for the plant was calculated.

**Evaluation of epidermal characters**

0.5 g of the powdered plant material was added to a beaker and a sufficient quantity chloral hydrate of added to the plant to cover the material. This was left for 24 hrs to enable the total clearing of the of the plant material. After 24hrs, with the help of a paintbrush, the resulting solution was placed on a clean slide. 2 drops of glycerol were added on the slide and covered with a coverslip. The slide was mounted on the microscope and viewed accordingly with a magnification of 100x.

**RESULT AND DISCUSSION****Percentage yield of extract**

$$\% \text{ yield} = \frac{\text{Mass of extract}}{\text{Mass of crude plant}} \times 100$$

$$\% \text{ yield} = \frac{23}{1000} \times 100 = 2.3\%$$

**Ash value determination (Total ash value)**

Weight of crucible = 35.22 g

Weight of crucible + burnt extract = 35.43 g

Weight of air dried sample = 2 g

Weight of ash = 35.43 - 35.22 = 0.21

$$\text{Percentage ash value} = \frac{\text{Weight of ash}}{\text{Weight of sample}} \times 100$$

$$\text{Percentage ash value} = \frac{0.2}{2} \times 100 = 2.3 \%$$

### Phytochemical analysis

The result of the phytochemical evaluation showed that the plant was abundantly rich in Alkaloids, Flavonoids and Saponin while Anthraquinones, cardiac glycosides, terpenoids and steroids were moderately present. Tannins, phlobatanins and reducing sugars were absent.

**Table 1: Phytochemical screening of the plant extract.**

Phytochemical test	Result
Alkaloid	+++
Flavonoid	+++
Tannin	-
Anthraquinone	++
Saponin	+++
Glycoside	++
Phlobatanin	-
Terpenoids	++
Steroids	++
Reducing sugar	-

Key : +++= abundantly present, ++= moderately present, - = absent.

### Cultivation and isolation of desired organisms

#### Cultivation and isolation of *Staphylococcus aureus*

Yellow colonies of *Staphylococcus aureus* were observed on the Mannitol salt agar (MSA). The colonies were gram positive and catalase and coagulase positive. The results are seen in the table below.

**Table 2: Identification and isolation of *Staphylococcus aureus*.**

IDENTIFICATION TEST	RESULT
Colour of colony on MSA	Yellow colonies
Gram staining	Positive
Catalase test	Positive
Coagulase test	Positive

### Cultivation and isolation of *Escherichia coli*

Reddish pink colonies of *Escherichia coli* were observed on the MacConkey agar. The colonies were gram negative and catalase positive. The results of the isolation and identification of *Escherichia coli* can be seen in the table below:

**Table 3: Identification and isolation of *Escherichia coli*.**

IDENTIFICATION	RESULT
Colour of colony on MacConkey agar	Reddish pink colonies
Gram staining	Negative
Catalase test	Positive

### Cultivation and isolation of *Salmonella typhi*

Black colonies of *Salmonella typhi* were seen on the Salmonella Shigella Agar (SSA). The gram staining was negative. The results of the isolation and identification can be seen in the table below.

**Table 4: Identification and Isolation of *Salmonella typhi*.**

Identification Tests	Results
Colour of colony of SSA	Black
Gram staining	Negative

### Cultivation and Isolation of *Pseudomonas aeruginosa*

Green colonies of *pseudomonas aeruginosa* were observed on the cetrimide agar. The gram staining was negative and the colonies were oxidase positive. The results are shown in the table below.

**Table 5: Identification and isolation of *Pseudomonas aeruginosa*.**

Identification Tests	Result
Colour of colonies on cetrimide agar	Green colonies
Gram staining	Negative
Oxidase test	Positive

### Antimicrobial Studies

#### Minimum Inhibitory Concentration (MIC) --Bacteria

The result of the MIC determination of the plant extract against the selected organisms were as follows. For *Bacillus subtilis*, the MIC was 25 mg/ml. The MIC of *Pseudomonas aeruginosa* was 1.5625 mg/ml. The MIC of *Staphylococcus aureus* was 12.5 mg/ml. The plant extract was not active against *Escherichia coli* in the concentrations used.

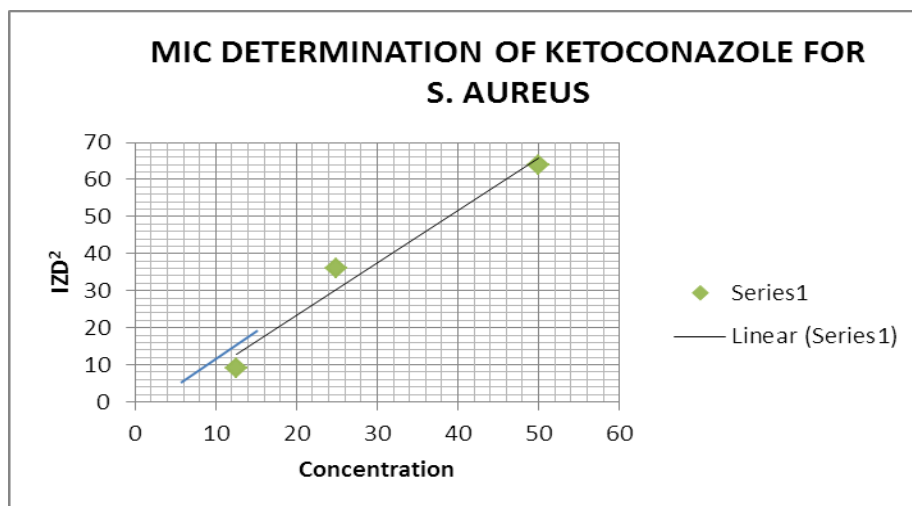
### Antibacterial Positive Control

For the positive, the IZD of ciprofloxacin against the selected organisms were determined with three concentrations. A graph of  $\text{IZD}^2$  was plotted against concentration. The intercept on the concentration axis represents the MIC.

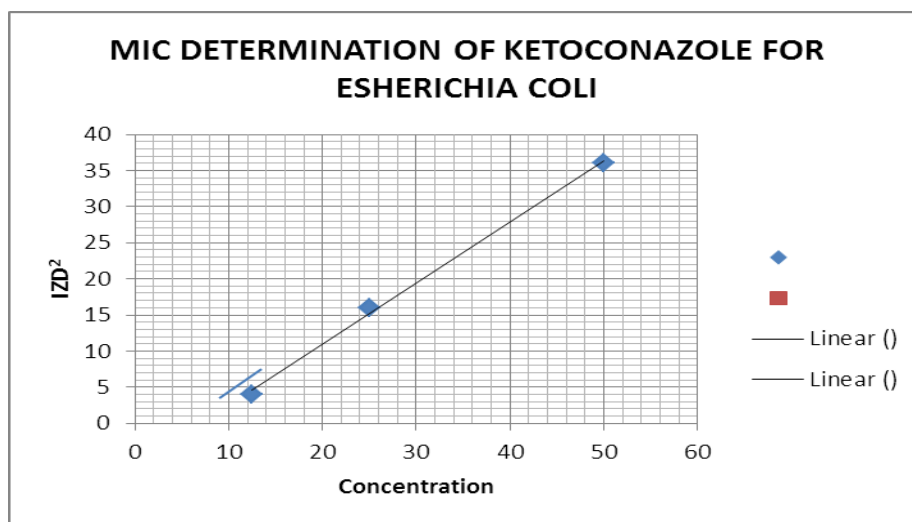
**Table 6: Inhibition Zone Diameter of the Antibiotic Control Against the Bacteria.**

Conc ug/ml	Inhibition Zone Diameter (IZD) (mm)			
	S. aureus	E. coli	S. typhi	P. aeruginosa
50	8	6	8	3
25	6	4	5	1
12.5	3	2	3	0.5

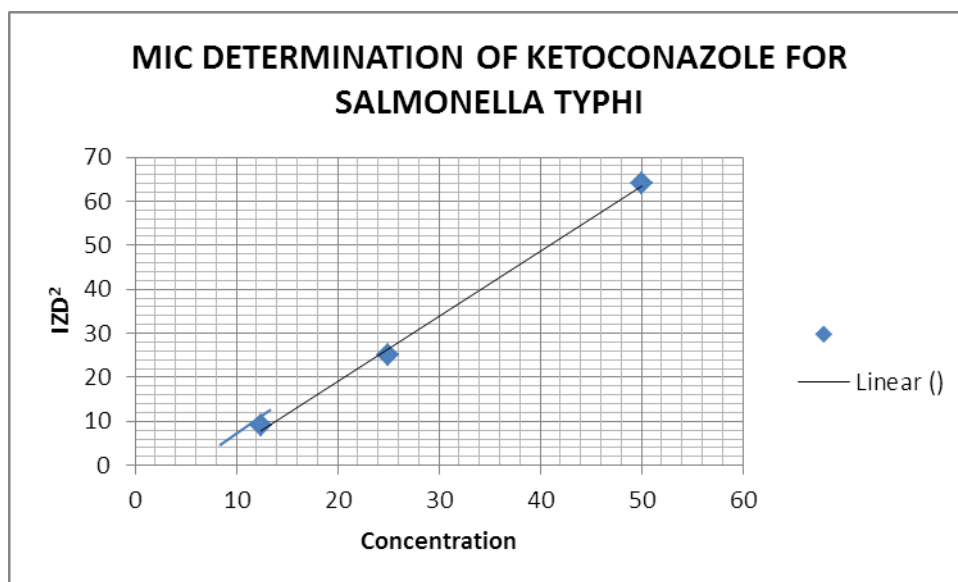
The graphs of the different  $\text{IZD}^2$  against concentration were plotted accordingly.



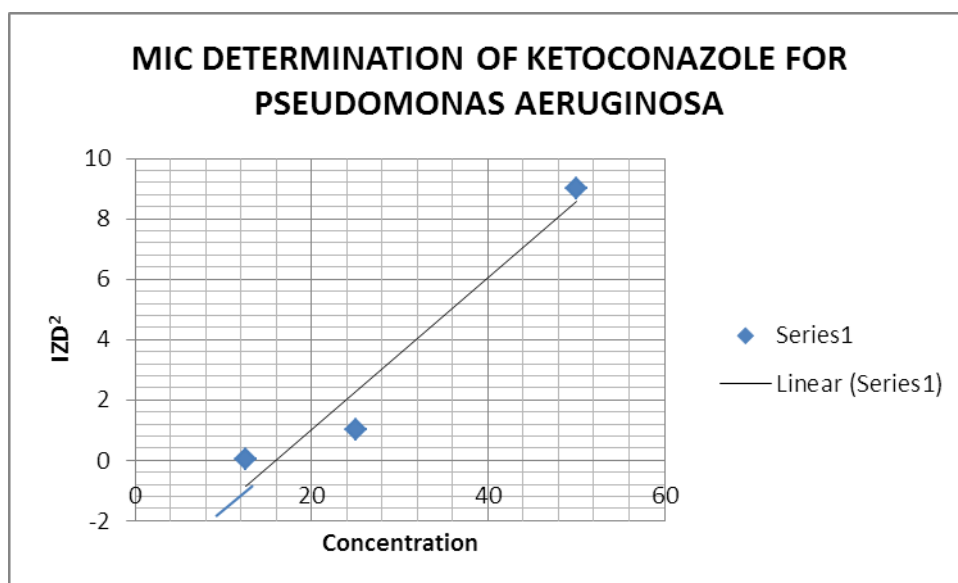
**Figure 1: MIC DETERMINATION OF KETOCONAZOLE FOR S. AUREUS.**



**Figure 2: MIC DETERMINATION OF KETOCONAZOLE FOR ESHERICHIA COLI.**



**Figure 3: MIC DETERMINATION OF KETOCONAZOLE FOR SALMONELLA TYPHI.**



**Figure 4: MIC DETERMINATION OF KETOCONAZOLE FOR PSEUDOMONAS AERUGINOSA.**

The MIC of the control of the selected bacteria were extrapolated from the graph and tabulated

Organisms	<i>S. aureus</i>	<i>E. coli</i>	<i>S. typhi</i>	<i>P. aeruginosa</i>
MIC (ug/mL)	4.0	8.0	8.0	8.0

#### Minimum inhibitory concentration (MIC) -- Fungi

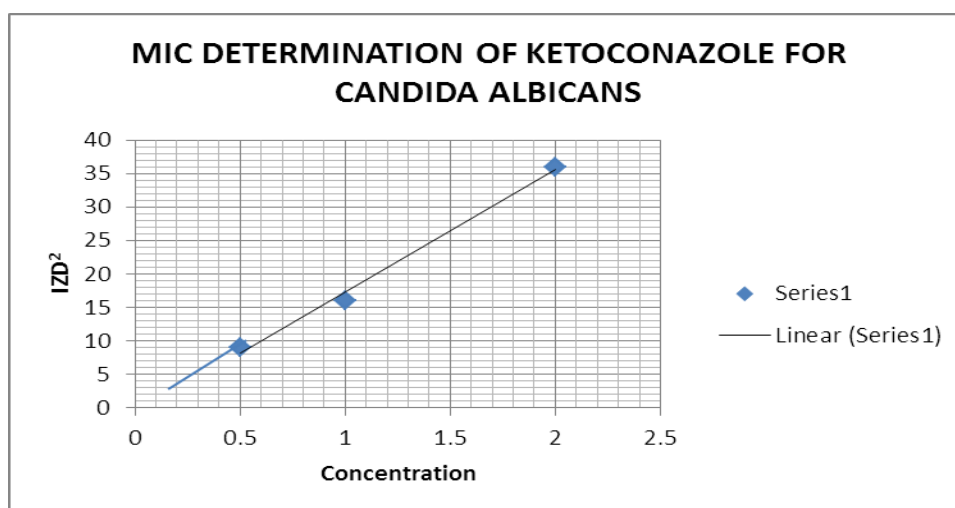
The MIC of the plant extract on *Candida albicans* was 50 mg/mL. The plant extract was not active against *Aspergillus niger*.

### Antifungal positive Control

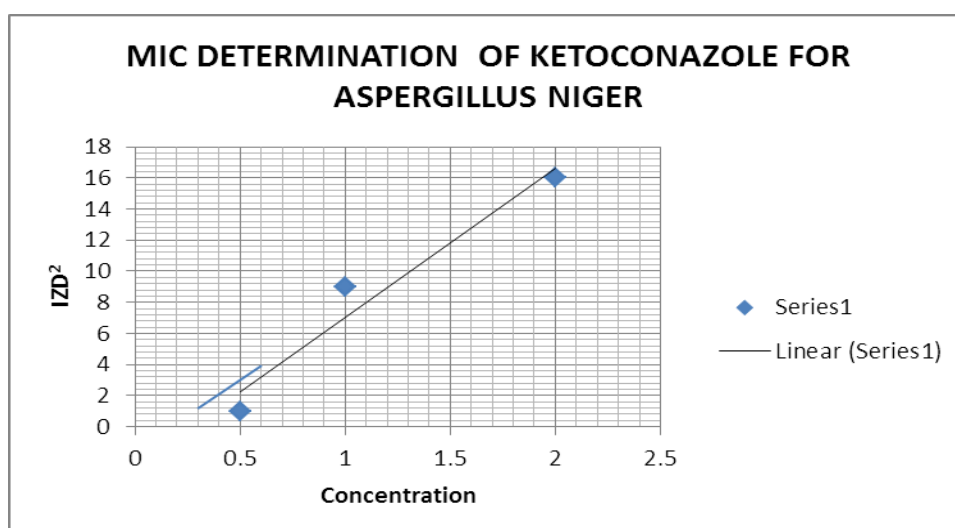
For the positive control, the IZD of ketoconazole against the selected organisms were determined with three concentrations. A graph of  $IZD^2$  was plotted against concentration. The intercept on the concentration axis represents the MIC.

**Table 7: Inhibition zone diameter of the antifungal control against the fungi.**

Conc ug/ml	Inhibition Zone Diameter (IZD) (mm)	
	Candida albicans	Aspergillus niger
2.0	6	4
1.0	4	3
0.5	3	1



**Figure 5: MIC DETERMINATION OF KETOCONAZOLE FOR CANDIDA ALBICANS.**



**Figure 6: MIC DETERMINATION OF KETOCONAZOLE FOR ASPERGILLUS NIGER.**



MIC of the control on the selected fungi were extrapolated from the graph and tabulated

Organisms	<i>C. albicans</i>	<i>A. niger</i>
MIC (ug/mL)	0.1	0.25

### Minimum Biocidal Concentration--Bacteria

The Minimum Biocidal Concentration(MBC) of the extract against the selected organisms were determined and the result is as follows.

For *Bacillus subtilis*, the minmum MBC was 50 mg/mL. The MBC of *Pseudomonas aureginosa* was 6.25 mg/mL. The MBC of *Staphylococcus aureus* was 25 mg/ml.

### Minimum Biocidal Concentration Fungi

The MBC of *Candida albicans* was 50 mg/mL, same with the Minimum Inhibitory Concentration (MIC).

The MBC was not determined for the organisms that did not show activity in the MIC.

The following results are represented into the table below.

**Table 8: MIC of the Plant Extract Against the Organisms.**

Conc (mg/ml)	<i>B. subtilis</i>	<i>E.coli</i>	<i>P. aureginosa</i>	<i>S. aureus</i>	<i>C. albicans</i>	<i>A. niger</i>
200	—	+	—	—	—	+
100	—	+	—	—	—	+
50	—	+	—	—	+	+
25	+	+	—	—	+	+
12.5	+	+	—	+	+	+
6.25	+	+	—	+	+	+
3.125	+	+	—	+	+	+
1.5625	+	+	+	+	+	+

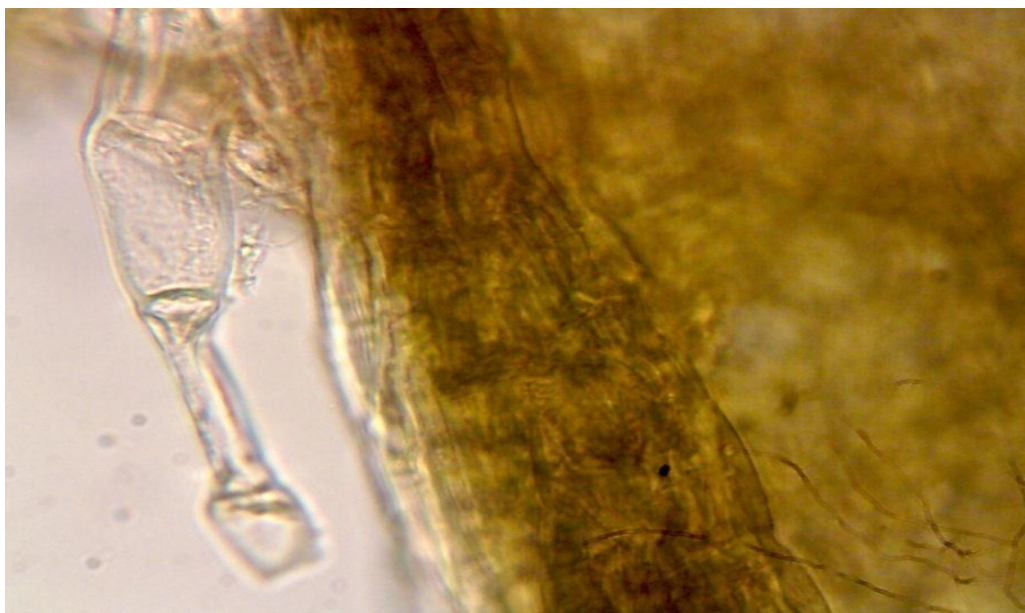
Key + = Growth; - = No growth

**Table 9: MIC and MBC of the Selected Organisms.**

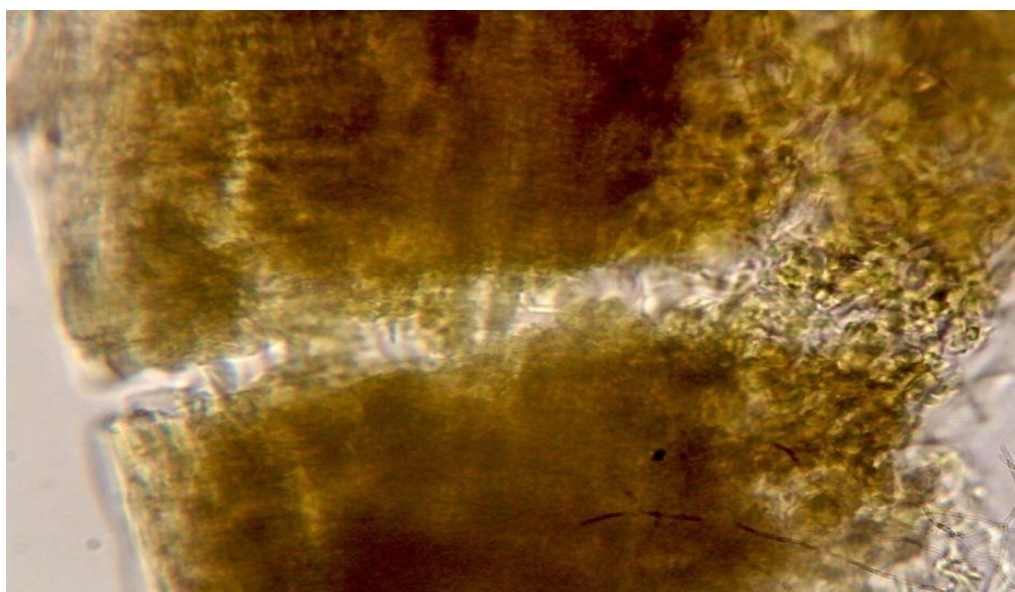
Organisms	MIC (mg/ ml)	MBC (mg/ml)
<i>Salmonella typhi</i>	25	50
<i>Escherichia coli</i>	*	*
<i>Pseudomonas aureginosa</i>	1.5625	6.25
<i>Staphylococcus aureus</i>	12.5	25
<i>Candida albicans</i>	50	50
<i>Aspergillus niger</i>	*	*

**Evaluation of epidermal characters**

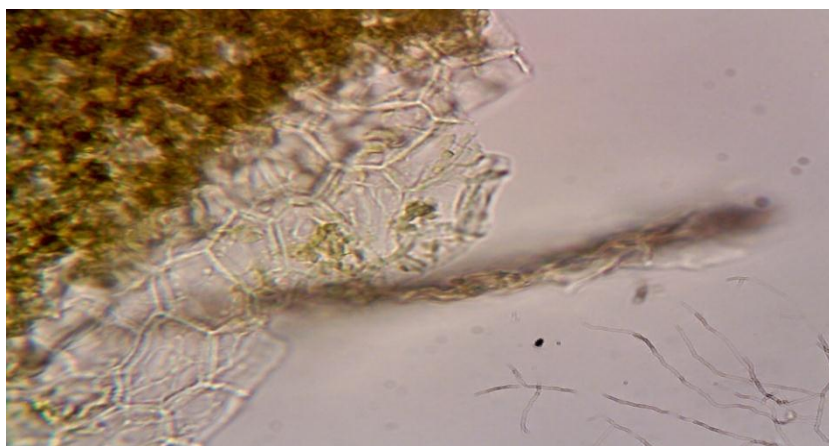
Evaluation of the epidermal characters of the whole leaf of *Luffa cylindrica*, with camera lucida and a Pharmacognostic atlas, the following features were revealed: Glandular trichomes, lamina surfaces, epidermal surface, palisade cells, calcium oxalate crystals, parenchyma and Sclerenchymatous layer, sieve tubes, endodermis with underlying pericyclic fibers as represented in Figures 7 – 12.



**Figure 7: Microscopic view Glandular trichomes.**



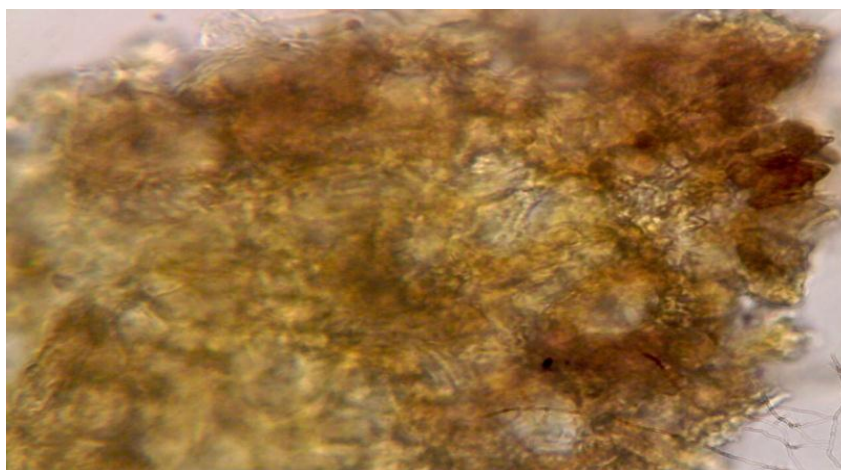
**Figure 8: Microscopic view of part of the lamina surface in sectional view.**



**Figure 9: Microscopic view of upper epidermis in surface view with crystals of calcium oxalate and stomata.**



**Figure 10: Microscopic view of laticiferous tissue with associated vessels and parenchyma.**



**Figure 11: Microscopic view of sclerenchymatous layer of the pericarp in surface from above.**





**Figure 12: Microscopic view of parts of a vein in longitudinal section showing palisade cells.**

## DISCUSSION

The phytochemical active compounds of methanol extracts of *Luffa cylindrica* were quantitatively analyzed and the results are presented in a table 1. The phytochemicals; alkaloid, saponin and flavonoid were found to be abundant in the plant extract. Anthraquinone, glycoside, terpenoids and steroids were moderately present while tannin, phlobatanin and reducing sugar were absent.

The medicinal value of plants lies in some chemical substances that have a definite physiological action on the human body. Different phytochemicals have been found to possess a wide range of activities, which may help in protection against chronic diseases (Mir *et al.*, 2013). Many medicinal plants are considered to be potential antimicrobial crude drugs as well as a source for novel compound with antimicrobial activity, with possibly new modes of action (Dhiman *et al.*, 2012).

The percentage ash value of the leave powder was determined and found to be 2.3%, which is low. This showed that the plant has a high percentage of volatile constituents and phytochemicals which evaporated on heating. As burning destroys all but the mineral components, the mass of the residue provides an indication of the contribution that minerals made to the original material (Evers *et al.*, 1999). This means that the plant sample contains a low percentage by mass of mineral components.

The antimicrobial activity of methanol extracts of the leaves of *Luffa cylindrical* against the environmentally isolated organisms are shown in a table 8. The results which were in Minimum Inhibitory Concentration (mg/mL) of the the methanol leaf extract against indicator bacteria and fungi. *Staphylococcus aureus*, *Salmonella typhi*, *Pseudomonas aeruginosa* and *Candida albicans* were susceptible to the methanol leaf extract of *L. cylindrical*, with the exception of *Escherichia coli* and *Aspergillus niger* which were resistant to the methanol extract. *Pseudomonas aeruginosa* was the most sensitive bacterium to the plant extract with MIC of 1.56 mg/mL while *Candida albicans* was the most sensitive fungus to the extract with MIC of 50 mg/mL.

The methanol leaf extract of *Luffa cylindrical* had activity against the environmentally isolated microorganisms. The MIC of the controls used (ciprofloxacin and ketoconazole) were extrapolated from a graph of  $\text{IZD}^2$  against concentrations.

For the antibacterial control, it was observed that the organisms were sensitive to the control (Ciprofloxacin). The control was active against *S. aureus* which was resistant to the plant test extract. The MIC of ciprofloxacin against *S. aureus*, *E. coli*, *S. typhi* and *P. aeruginosa* were 4.0 mcg, 8.0 mcg, 8.0 mcg and 8.0 mcg respectively. For the antifungal control, it was also observed that the organisms were sensitive to the control (Ketoconazole). The control was active against *A. niger* which was resistant to the plant test extract. The MIC of ketoconazole against *A. niger* and *C. albicans* were 0.25 mcg and 0.1 mcg respectively.

Epidermal characters of the leaf showed the presence of the specific cellular structures like the parenchyma, crystals of calcium oxalates, epidermal hairs (glandular trichomes) and stomata.

## CONCLUSION

The methanol leaf extract of *luffa cylindrical* demonstrated anti microbial activities against *S. aureus*, *S. typhi*, *P. aeruginosa* and *C. albicans* which were environmentally isolated. Some organisms like *E. coli* and *A. niger* were resistant to the methanol extract of *luffa cylindrical*. Therefore, from the results obtained, *luffa cylindrical* possesses antimicrobial activity against some environmentally isolated microorganisms.

### Recommendation

I recommend that the plant *Luffa cylindrical* should be standardized, validated and used to treat infections caused by *Pseudomonas aeruginosa*. This is because it had profound activity against the organism even at the lowest concentration.

I also recommend that the plant *Luffa cylindrical* should be formulated into antimicrobial hand sanitizers as it was active against most of the environmentally isolated microorganisms which predisposes one to infections.

### REFERENCES

1. Abarca M, Bragulat M, Castellá G, Cabañes F (1994) “*Aspergillus niger*. Var niger”, 60(7): 2650– 2652.
2. Akinjogunla OJ, Yah CS, Eghafona NO and Ogbemudia FO (2010). Annals of Biological Research, 1(2): 174-184.
3. Bailey LH (1989). The Garden of Gourds. 2<sup>nd</sup> Edn., Macmillan Heiser, pp: 16-45.
4. Bal KE, Bal Y and Lallam A (2004). Gross morphology and absorption capacity of cell-247. Fibers from the Fibrous Vascular System of Loofah (*Luffa cylindrica*). Textile Research Journal, 74(3): 241– 298.
5. Balcht A, Smith R (1994). *Pseudomonas aeruginosa*: Infections and Treatment.
6. Informa Health Care. 83–84. ISBN 0-8247-9210-6.
7. Bentley R, Meganathan R (1982). "Biosynthesis of Vitamin K (menaquinone) in Bacteria". Microbiological Reviews, 46(3): 241–280. PMC 281544. PMID 6127606.
8. Calderone RA and Fonzi WA (2001). Virulence Factors of *Candida albicans*. Trends in Microbiology, 9(7): 327-335.
9. CDC National Center for Emerging and Zoonotic Infectious Diseases “*Escherichia coli*”. Retrieved 2012-10-02.
10. Cimolai N (2008). "MRSA and the Environment: Implications for Comprehensive Control Measures". Eur. J. Clin. Microbiol. Infect. Dis., 27(7): 481–493.
11. Ciprandi G, Scordamaglia A, Venuti D, Caria M and Canonica GW (1986). "In Vitro Effects of *Bacillus subtilis* on the Immune Response". *Chemioterapia* 5(6): 404-407.
12. Crump JA, Luby SP, Mintz ED (2004). "The Global Burden of Typhoid Fever." *Bulletin of the World Health Organization*, 82(5): 346–353. Retrieved 2 August 2015.
13. Cushnie TP, Cushhnie B, Lamb AJ (2014) “Alkaloids; An Overview of their Antibacterial, Antibiotic Enhancing and Antivirulence Activities”.

14. Denfert C, Hube B (2007). *Candida: Comparative and Functional Genomics*. Caister Academic Press. ISBN 978-1-904455-13-4.
15. Dhiman A, Nanda A, Ahmad S and Narasimhan B (2012). *In- vitro* Antimicrobial Status of Methanolic Extracts of *Citrus sinensis* Linn. Fruit Peel. *Chronicles of Young Scientists*, 3(3): 204 – 208.
16. Dinges MM, Orwin PM, Schlievert PM, Orwin S (2000). "Exotoxins of *Staphylococcus aureus*" Clin. Microbiol. Rev., 13(1): 16–34.
17. Douwes K, Schmalzbauer E, Linde H, Reisberger E, Fleischer K, Lehn N, Landthaler M, Vogt T (2003). "Branched Filaments no Fungus, Ovoid Bodies no Bacteria: Two unusual cases of Mycetoma". (2 Supplement Case Reports): S170-173.
18. Evers AD, Kelfkens M, McMaster G (1999). "Ash Determination – A useful Standard of Ash In The pan?"
19. Fabrega A, Vila J (2013). "*Salmonella enterica* Seroovar Typhimurium Skills To Succeed in the Host: Virulence and Regulation". Clinical Microbiology Reviews, 26(2): 308–341. doi:10.1128/CMR.00066-12. ISSN 0893-8512 Firm, Richard 2010 "Nature's chemical".
20. Fraenkel GS (1959). "The Raison d'Etre of Secondary Plant Substances". *Science*, 129(3361): 1466–1470. doi:10.1126/science.129.3361.1466. PMID 13658975.
21. Fredrickson JK, Zachara JM, Balkwill DL (2004) "Geomicrobiology of High-Level Nuclear Waste-Contaminated Vadose Sediments at the Hanford site, Washington State". *Applied and Environmental Microbiology*, 70(7): 4230-4241.
22. Germplasm Resource Information Network GRIN (2000). "*Luffa aegyptiaca* Information from NPGS/GRIN". Taxonomy for Plants.
23. Hans Lambers F, Stuart Chapin III, Thijs L, Pons (2013).
24. Hsin-Yun Sun MD, Shigeki Fujitani MD, Richard Quintiliani MD, Victor L, Yu MD (2011).
25. Hudault S, Guignot J, Servin AL (2001). "*Escherichia coli* Strains Colonising the Gastrointestinal Tract Protect Germfree Mice Against *Salmonella typhimurium* Infection" *Gut*, 49(1): 47–55. doi:10.1136/gut.49.1.47. PMC 1728375. PMID 11413110.
26. Institute for Research in Molecular Medicine (INFORMM) (2012). Universiti Sains Malaysia, 11800 USM, Penang, Malaysia Inventory of GRAS Notices: Summary of all GRAS Notices". *US FDA/CFSAN*. (2008) Archived from the original on 11 October 2008. Retrieved 2008-10-31.



27. Itah AY, Essien JP (2005). "Growth Profile and Hydrocarbonoclastic Potential of Microorganisms Isolated from Tarballs in the Bight of Bonny, Nigeria". *World Journal of Microbiology and Biotechnology*, 21(6–7): 1317–1322. doi:10.1007/s11274-004-6694-z
28. IUPAC Compendium of Chemical Terminology, 2<sup>nd</sup> Edition Compiled by A.D McNaught and A Wilkinson 1997.
29. Jantsch J, Chikkaballi D, Hensel M (2011). "Cellular Aspects of Immunity to Intracellular *Salmonella enterica*". *Immunological Reviews*, 240(1): 185–195.
30. Kabera Justin N., Edmund Semana, Ally R. Musa and Xin He, (2014)- *Journal of Pharmacy and Pharmacology* 2.
31. Kao LS and Tammy L (2009). "Pre Test, Surgery", 12: 88.
32. Kittakoo MC, Ruchirawat S (2014). "Alkaloids as Important Scaffolds in Therapeutic Drugs for the Treatments of Cancer, Tuberculosis, and Smoking Cessation", 14(2): 239-252.
33. Kelfkens M. TNO Nutrition and Food Research, PO Box 360, Utrechtseveg 48,3700 AJ Zeist, The Netherlands.
34. Lowy F. (2009) "Bacterial Classification, Structure and Function"
35. Madigan M, Martinko J (2005). *Brock Biology of Microorganisms* (11<sup>th</sup> ed.). Prentice Hall. ISBN 0-13-144329-1.
36. Manske RHF (1965) *The Alkaloids, Chemistry and Physiology*, 8: 581–589.
37. Marjan N, Hossein H (2008). "Review of pharmacological effect of *Glycyrrhiza sp* and its Bioactive Compounds", 22(6): 709-724.
38. McClements D. Julian Department of Food Science University of Massachusetts Amherst 240 Chenoweth Laboratory 102 Holdsworth Way, Amherst.
39. McGrath M S, Hwang SE, Caldwell SE and Liston JD (1989). GLQ 223: An inhibitor of human immunodeficiency virus replication in acutely and chemically infected cells of lymphocyte and mononuclear phagocyte lineage. *Nat. Acad. Sci. USA.*, 86: 2844-2848.
40. *Medical Laboratory Manual For Tropical Countries*, 1986; 134(12): 1378.
41. *Merriam-Webster Online Dictionary*.
42. Mir MA, Sawhney SS and Jassal MMS (2013). Qualitative and Quantitative Analysis of Phytochemicals of *Taraxacum officinale*. *Wudpecker Journal of Pharmacy and Pharmacology*, 2(1): 1 – 5.
43. Mothes K, Schulte HR, Luckner M (1985). *Biochemistry of Alkaloids*.
44. Nagao T, Lanaka R, Iwase Y, Hanazone H and Okabe H (1991). Studies on the constituents of *Luffa acutangula* Roxb. *Clin. Pharm.Bull.*, 39: 599-606.

45. Nakano MM, Zuber P (1998). "Anaerobic Growth of A "Strict Aerobe" (*Bacillus Subtilis*)". *Annual Review of Microbiology*, 52(1): 165–90. doi:10.
46. Neuwinger HD (2000). *African Traditional Medicine: A Dictionary of Plant use and Application*. Medpharm Scientific, Stuttgart, Germany, 589.
47. Ng TB, Z. Feng, W.W. Li and H.W. Yeung, 1991. Improved isolation and further characterisation of beta trichosanthin: A ribosome inactivating and abortifacient protein from tubers of *Trichosanthes cucumeroicles* (cucurbitaceae). *Int. J. Biochem.*, 23: 561-567.
48. Oggioni MR, Pozzi G, Valensin PE, Galieni P, Bigazzi C (1998). "Recurrent Septicemia in an Immunocompromised Patient due to Probiotic Strains of *Bacillus subtilis*".
49. Ogston A (1984). "On Abscesses". *Classics in Infectious Diseases*. *Rev Infect Dis.*, 6(1): 122– 128.
50. Palexander 13. webs.com *Staphylococcus aureus*: Reproduction".
51. Park ES, Moon WS, Song MJ, Kim MN, Chung KH and Yoon JS (2001). "Antimicrobial Activities of Phenol and Benzoic acid Derivatives".
52. Patent Medicine-Bo Ying Compound. *Microscopy Research and Technique*. 2005; 67: 305-311.
53. Pengelly A (2004). "The Constituents of the Medicinal Plants; An Introduction to the Chemistry and Therapeutics of Herbal Medicines".
54. Peter ES (2011). "Growth of *Candida albicans* hyphae" (PDF). *Nature Reviews Microbiology*, 9(10): 737–748. doi:10.1038/nrmicro2636. PMID 21844880
55. Quideau S (2006) "Why Bother with Polyphenols".
56. Quideau S (2004) "Will Polyphenols someday be used as Chemotherapeutic Drugs in Western Medicine?".
57. Roberts MF, Michael W (1998). 'Alkaloids, Biochemistry, Ecology and Medicinal Application', 49(3): 238-239.
58. Raymond SS, Jonathan SJ, Michael J, Watkins P (2010). "The Essence of Analgesia and Analgesics".
59. Reid G, Howard J, Gan BS (2001). "Can Bacterial Interference Prevent Infection?". *Trends in Microbiology*, 9(9): 424–428.
60. Rikkerrink E, Magee B, Magee P (1988). "Opaque-White Phenotype Transition: A Programmed. Morphological Transition in *Candida albicans*" *J. Bact.*, 170(2): 895–899. PMC 210739. PMID 2828333.
61. Robert Alan Lewis- Lewis dictionary of toxicology 1998.

62. Russo P, Frustaci A, Del Bufalo A, Fim M, Cesario A (2013) 'Multitarget Drugs of Plants Origin Acting on Alzheimer's Disease'.
63. Ryan KJ, Ray CG (2004). *Sherris Medical Microbiology* (4<sup>th</sup> ed.). McGraw Hill. 362–368. ISBN 0-8385-8529-9.
64. Schulz H, Jorgensen B (2001). "Big bacteria". *Annu Rev Microbiology*; 55: 105-137.
65. Singleton P (1999). *Bacteria in Biology, Biotechnology and Medicine* (5<sup>th</sup> ed.). Wiley. 444–454. ISBN 0-471-98880-4.
66. Staiano M, Bazzicalupo P, Rossi M, D'Auria S (2005). "Glucose Biosensors as Models for the Development of Advanced Protein-Based Biosensors". *Molecular bio Systems*, 1(5–6): 354–362.
67. Steele CL, Sadanobu K, Jorg B, Rodney C (1998). *Plant Physiology*, 116: 1467.
68. Subramanion JL and Sreenivasan ST (2010) 'Why Natural Medicine'
69. Todar K (2007). "Pathogenic *E. coli*". Online Textbook of Bacteriology. University of Wisconsin–Madison Department of Bacteriology.
70. Todar's Online Textbook of Bacteriology. Textbookofbacteriology.net (2004-06-04). Retrieved on 2011-10-09.
71. Trease and Evans Pharmacognosy (2009).
72. Vincenzo L, Paul AK, Stephanie Q and Dieter T (2006). "Recent Advances in Polyphenol Research" 1: 1 – 35.
73. Vogt RL, Dippold L (2005). "*Escherichia coli* O157:H7 Outbreak Associated with Consumption " of Ground Beef, June-July 2002". *Public Health Reports (Washington, D.C.: 1974)*; 120(2): 174–8. PMC 1497708. PMID. 15842119.
74. Wolfgang S (1999). "Anne Miller, 90, First Patient Who Was Saved by Penicillin".
75. Xia L, Bai LP, Chu C, Ping LP, Jiang ZH, Zhao ZZ (2008). Authentication of the 31 Species of Toxic and Potent Chinese Materia Medica (T/PCMM) by Microscopic Technique, Part 2: Three Species of Seed T/PCMM. *Microscopy Research and Technique*, 71: 325-333.
76. Zhao ZZ, Hu YN, Wong YW, Wong WCG, Wu K, Jiang ZH, Kang T (2014) Application of Microscopy in Authentication of Chinese, 68(2): 340-350.