

**A REVIEW ON CORONARY ARTERY DISEASE****Rushil Prajapati<sup>1\*</sup>, Pooja Patel<sup>2</sup> and Dr. Umesh Upadhyay<sup>3</sup>**Student<sup>1</sup>, Assistant Professor<sup>2</sup>, Principal<sup>3</sup>

Sigma Institute of Pharmacy(261), Ajwa Nimeta Road, Bakrol, Vadodara, Gujarat-390019.

Article Received on  
04 Sept. 2021,Revised on 25 Sept. 2021,  
Accepted on 15 Oct. 2021

DOI: 10.20959/wjpr202113-22133

**\*Corresponding Author****Rushil Prajapati**Student, Sigma Institute of  
Pharmacy(261), Ajwa  
Nimeta Road, Bakrol,  
Vadodara, Gujarat-390019.**ABSTRACT**

Heart disease is most common disease occurred in general population in these days according to the research work. Coronary heart disease is disease occurred in population as increase in the upcoming scenario due to junk food intake containing high consumption of highly lipid and bad cholesterol by the major percentage of the population. The main factors of the highly rising CAD are malnutrition, high salt intake, not having proper balance diet, consumption of alcohol, not exercising regularly, etc. The medical management's ambition is to spread awareness to the public regarding CAD. The CAD various prevention are some as regularly exercising, yoga asana, eating healthy

food. CAD is one of the most common reason for death of people. For spreading knowledge and awareness regarding to CAD this article explores information of the CAD like different types of CAD, pathophysiology, prevention and treatment.

**KEYWORDS:** Heart Disease, Coronary Artery Disease (CAD), Athereogenesis, Inflammation, LDL, HDL, Athereogenesis Plaque.

**AIM AND OBJECTIVE**

As heart disease is one of the most reason of death all over world. Among various heart disease the Coronary Artery Disease (CAD) is very dangerous disease that leads to the death. It causes death to 18.2 million in adults which is almost 6.7% of the total world population.<sup>[1]</sup> The combination of CAD with Chronic Kidney Disease (CKD) and ESRD the total number of deaths are 3,20,000 or more than per year. CAD disease patients are suffering from it due to malnutrition, stress, obesity, not taking proper diet, and not perform exercise on the regular basis. The main aim of the medical trials to develop a cure and prevention remedies for

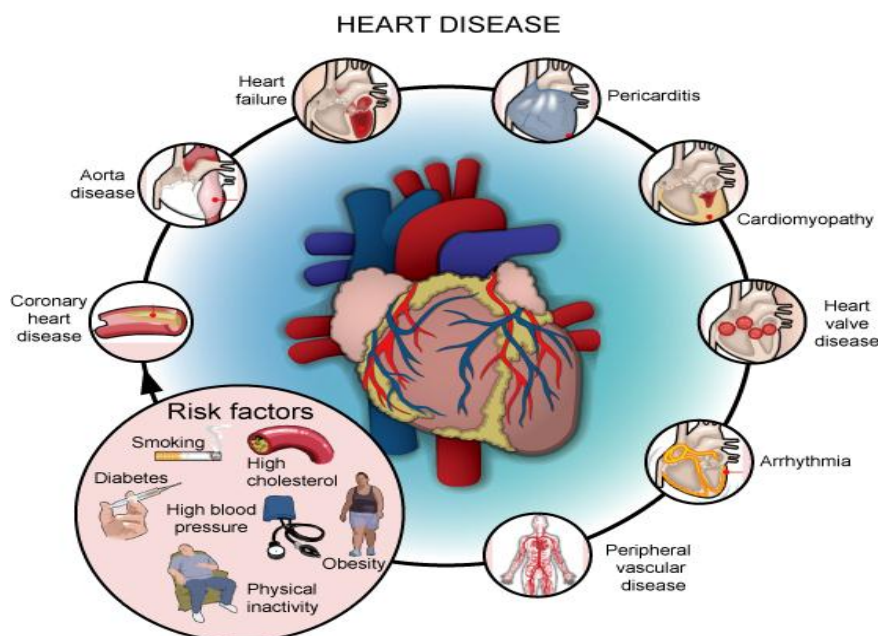
patient suffering from Coronary Artery Disease (CAD). Their main target is to less the disease effect and their symptoms.<sup>[1]</sup>

The coronary artery disease has vast expansion and it deals with various other diseases that leads to various risk factors of body. This article explores the detailed study of coronary artery disease pathophysiology, types, signs and symptoms, clinical prevention, treatment.<sup>[2]</sup>

## INTRODUCTION

Heart is very important part of the body. The main function of heart is to stabilize the pressure of blood and purify the blood by passing it to lungs. The other function is to pass equal pressurized blood containing O<sub>2</sub> to all body organs and bring CO<sub>2</sub> from all over body organs. There are various heart disease from which some major heart disease leads to death are listed as Heart Failure, Pericarditis, Coronary Artery Disease, Cardiomyopathy, Heart valve disease, Arrhythmia, Peripheral Heart Disease and Aorta Disease.

Among all these disease Coronary artery disease is one of the most dangerous disease as it cause slow death due to deposition of the cholesterol in the arteries of the heart. Due to deposition of the cholesterol the blood flow in arteries which affect on heart muscle (Atherosclerosis) which build plaque in the arteries. Plaque consist of fatty substance, waste products, cholesterol calcium and clot making fibrin hormone. It is the one of the most common cardiovascular disease .This include Stable angina, Unstable angina Myocardial infarction and sudden cardiac arrest. There are various names which are Atherosclerotic heart disease, atherosclerotic vascular disease, and coronary heart disease. Due to modern lifestyle, lack of exercise and intake of junk food the risk of coronary artery disease has been increase to very high level which includes 8/9 out of 10 people will suffer from Coronary artery disease (CAD) with combination of Chronic Kidney Disease (CKD).Coronary artery disease with combination of ESRD which lead to kidney dialysis and kidney transplantation in the world. In world number of patients suffering with ESRD and CAD is likely less than patients suffering with CKD and CAD.<sup>[2]</sup>



**FIG 1: Heart Disease.**

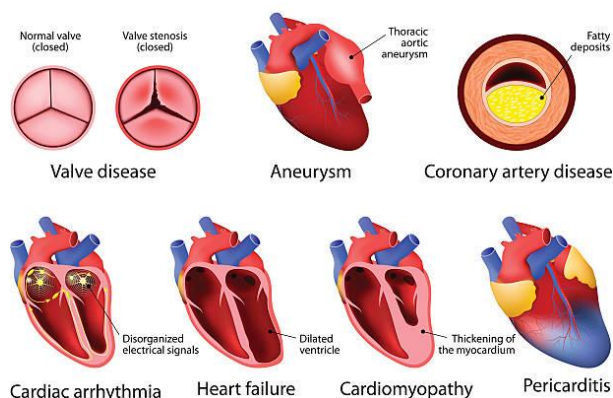
As shown in figure 1 due to storage or deposition of cholesterol molecules CAD risk factor increases. The coronary arteries are the arteries that supply continuous blood to heart for pumping action. The coronary arteries are directly located on top of heart muscle. Due to plaque heart does not get enough supply of  $O_2$  and minerals the state is called “Ischemia”. Due to ischemia chest pain and chest discomfort situation is referred to as “Angina”.

### TYPES OF HEART DISEASE

There are various different types of heart disease which are enlisted as follows.

- Coronary Artery Disease (CAD)
- Heart Arrhythmias.
- Heart Failure.
- Heart Valve Disease.
- Pericardial Disease.
- Cardiomyopathy (Heart Muscle Disease)
- Congenital Heart Disease.

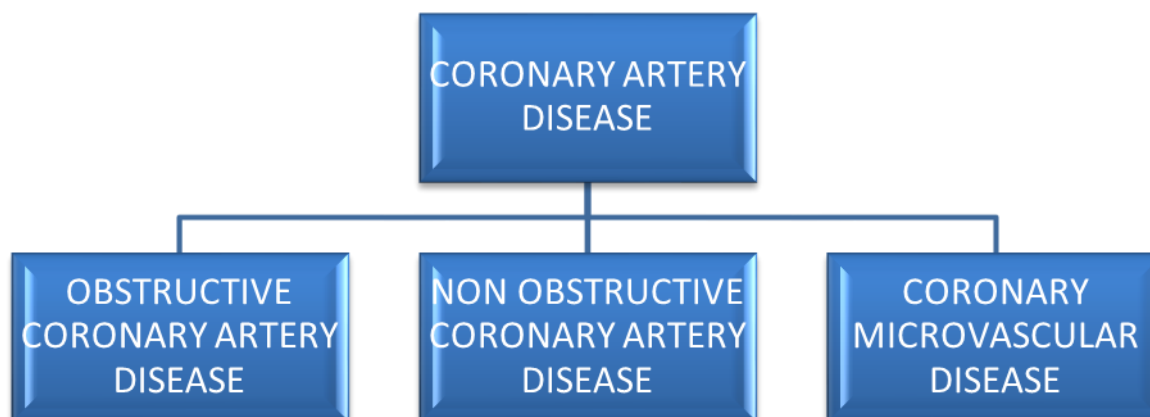
## Types of heart disease



**FIG 2: Types of Heart Disease.**

Coronary arteries mostly effect on the arteries of the heart like left coronary artery and right coronary artery. There are 3 types of coronary artery disease which are enlisted as follows:

1. Obstructive coronary artery disease
2. Non-obstructive coronary artery disease
3. Coronary microvascular disease.



**FIG 3: Above diagram shows various types of (CAD).**

### 1. Obstructive coronary artery disease

Obstructive coronary artery disease is the moderate shutting of arteries that offers supply the heart muscles with blood. This blockage is caused by a deposition of plaque (atherosclerosis). It can begin more likely in teenager and adults, moderate increase in some people.

If the blockage gets severe adequate, it can block the flow of oxygenated blood in the heart's muscle. Sometimes a blockage can occur acutely. This is called a heart attack.

Obstructive coronary artery disease is also called coronary heart disease (CHD). CHD is the leading cause of death in general population. Death of men are possibly higher as compared to the women due to heart attack.<sup>[2]</sup>

## **2. Non-obstructive coronary artery disease**

Non obstructive coronary artery disease (CAD) is induration of the arteries plaque that doesn't kind to hinder blood flow or end in anginous symptoms.

Although such conditions are relatively common, occurring in 10 % to 25 % of patients undergoing coronary angiography. The presence of CAD is being characterized as "insignificant" in the medical terminology. However, the perception of non obstructive CAD is also incorrect, as a result of previous studies have noted that the bulk of plaque ruptures and resultant heart muscle infarctions (MIs; heart attacks) arise from non obstructive plaques.<sup>[3]</sup>

## **3. Coronary microvascular disease.**

Coronary microvascular illness (sometimes referred to as tiny artery illness or tiny vessel disease) is heart condition that affects the walls and inner lining of little arteria blood vessels that branch far from the larger coronary arteries. In coronary MVD, the heart's arteria blood vessels haven't got plaque, however harm to the inner walls of the blood vessels will cause spasms and reduce blood flow to the guts muscle. Additionally, abnormalities in smaller arteries that branch off of the most coronary arteries may additionally contribute to coronary MVD.<sup>[4]</sup>

## **ETIOLOGY**

A damaged or injured layer of coronart artery initiates CAD. This may sometimes develop even in childhood. The factors responsible for this damage are as follows:

- 1) Smoking.
- 2) High Blood Pressure.
- 3) High Cholestrol.
- 4) Diabetes/Insulin resistance.
- 5) Sedentary lifestyle.

In damaged coronary arteries, accumulation of plaque (fatty deposits of cholesterol and other cellular waste products) occurs at injury site (process known as Atherosclerosis). Breakdown or rupture of plaque results in clumping of platelets at the site; and clump blocks the artery, resulting in a heart attack.

Coronary artery disease is a multifactorial phenomenon. Etiologic factors are generally categorised into non-modifiable and modifiable factors. Non-modifiable factors embody gender, age, case history, and biology. Modifiable risk factors embody smoking, obesity, lipid levels, and psychosocial variables. Within the Western world, a quicker-paced style has semiconductor diode folks to eat a lot of fast foods Associate in Nursing unhealthy meals that has semiconductor diode to an redoubled prevalence of Coronary heart diseases. In the US, higher medical care within the middle and better socioeconomic teams has pushed the incidence towards the later a part of life. Smoking remains the quantity one explanation for vas diseases. In 2016, the prevalence of smoking among the us among adults was found to be at fifteen. 5%. The male gender is a lot of susceptible than the feminine gender. hypercholesteremia remains a vital modifiable risk issue for CAD. redoubled low-density lipoproteins (LDL) redoubled the chance for CAD and elevated high-density lipoproteins (HDL) decrease the incidence of CAD. a personality's 10-year risk of arterial sclerosis disorder is calculated victimization the ASCVD equation on the market on-line on the yank Heart Association portal. Markers of inflammation also are sturdy risk factors for arterial blood vessel illness. High sensitivity C-reactive protein (hsCRP) is assumed to be the most effective predictor of arterial blood vessel illness in some studies though uses for it in an exceedingly sensible setting area unit polemic.<sup>[5]</sup>

## **PATHOPHYSIOLOGY**

The underlying pathophysiologic mechanisms for these syndromes begin with the strategy of arteriosclerosis, that develops and progresses for several years before the acute event. arteriosclerosis is delineate as a inferior inflammatory state of the membrane (inner lining) of medium-sized arteries that is accelerated by the well-known risk factors like high level, high sterol, smoking, diabetes, and genetics. inside the case of coronary arteriosclerosis, this slow progression leads to the gradual thickening of the inner layer of the coronary arteries, which may over time slim the lumen of the artery to various degrees. arteriosclerosis leading to the acute syndromes of AMI and DS options a predilection for the proximal segments of the foremost vital coronary arteries generally at vessel bifurcation points that alter flow inside the



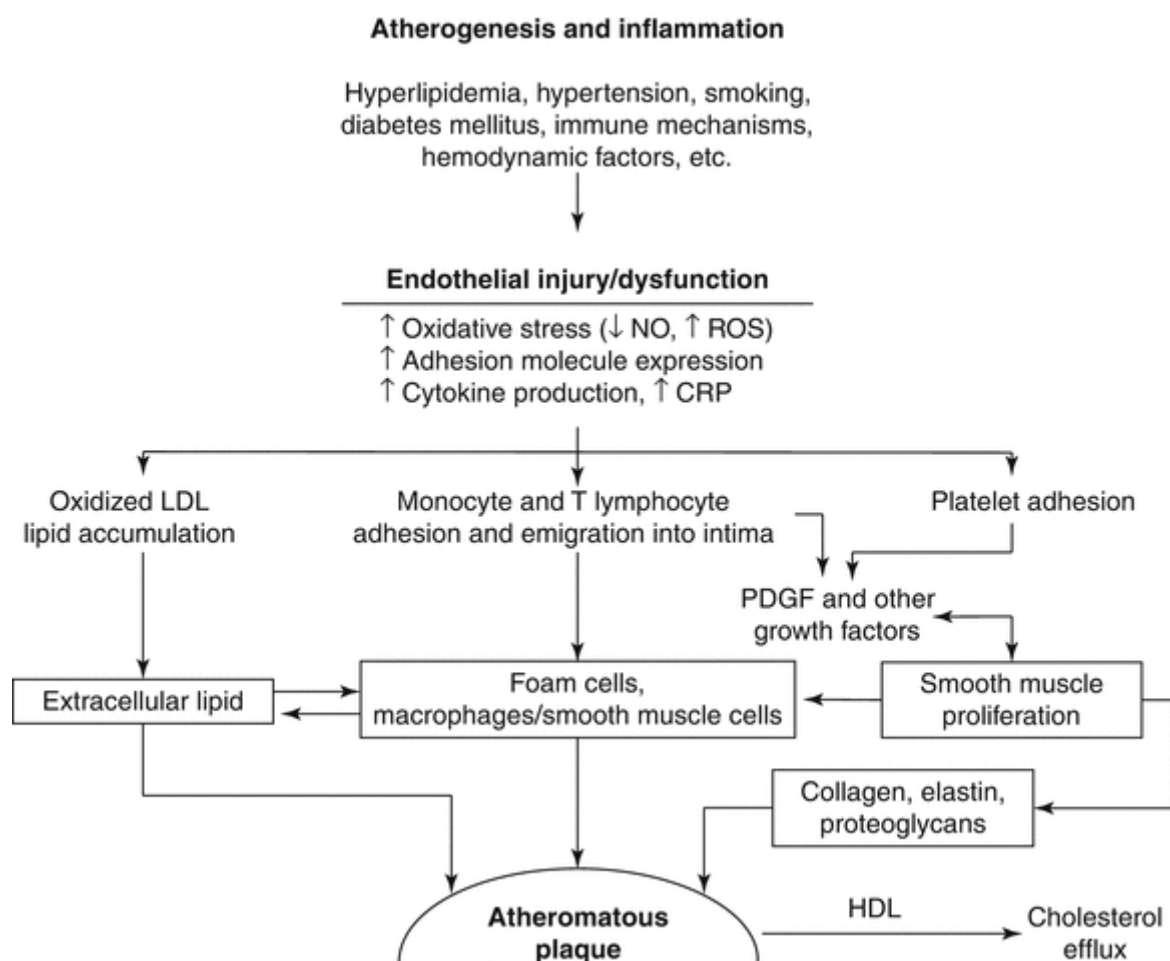
artery. This slow pathology of the arteries progression is {additionally} interrupted by one or additional cycles of speedy progression related to one in each of two processes: either well plaque disruption with formation of a non-occlusive intraluminal glob or plaque hemorrhage. Coronary artery malady is sometimes caused by a build up steroid created deposits or plaques on the liner among the artery. These plaques are remarked as fat plaques or just atheromas that they cause a thickening of the vas wall and a narrowing of the vas area through that blood flows to understand the middle. the quantity of blood reaching and provision the middle muscles (myocardium) with O and nutrients will so be reduced among the presence of atheromas.

An fat usually starts to develop as a results of injury or injury to the inner lining of the artery remarked as a result of the animal tissue. Once the animal tissue is broken, steroid, fats, lipoproteins and numerous mud begin to accumulate at the location of injury among the wall or tissue of the artery. High concentrations of rarity protein (LDL) penetrate the broken animal tissue and endure a action remarked as chemical action. This altered protein acts as a beacon that pulls white blood cells or leukocytes to migrate towards the vessel wall. As macrophages seem, they engulf the lipoproteins and become foam cells. These foam cells build to the earliest visible reasonably associate fat lesion remarked as a result of the fatty streak. Once the fatty streak is made, it then attracts the sleek muscle cells to the location, wherever they multiply and begin to supply entity matrix comprising of simple protein and proteoglycan. it's this entity matrix that forms associate outsize portion of the coronary-artery malady plaque. This turns the fatty streak into a fibrous plaque. The lesion then starts to bulge into the inner wall of the vas inflicting a massive narrowing of the downer area.

Next, the fibrous plaque starts to support itself. It develops its own tiny vessels to give} it with a provide of blood throughout a method remarked as growth. Thereafter, the plaques begin to calcify as metal starts to deposit. the ultimate word plaque is created of a cap of plant part covering a core that's created in lipids but as death or dead cells. the sting of this cowl is vital in acute coronary pathological state. This region is liable to rupture, that exposes the underlying core of lipids and death material to thrombogenic factors among the blood. this may cause the aggregation of platelets that kind a clot across the plaque and any slender the artery.

Arteries that became narrowed because of the presence of plaques might finish in angina or pain as a results of the muscles of the middle square measure empty O. as a results of the

deposits on the plaques grow in size and dimension, the blood vessels become any narrowed and there might even be obstruction resulting in a attack or a pathology.<sup>[6]</sup>



**FIG 4: Pathophysiology of CAD.**

## SIGNS AND SYMPTOMS

Coronary artery malady (CAD) doesn't sometimes cause symptoms till it becomes advanced. delicate symptoms will embrace vertigo, indigestion-like sensations, fatigue, and lack of energy. additional noticeable symptoms of CAD embrace shortness of breath and pain. These square measure all warning signs of a coronary failure and you must obtain medical attention if you've got any of the signs or symptoms of CAD.<sup>[7]</sup>

In general, symptoms of CAD square measure associated with narrowing of the blood vessels of the guts, which might intermittently stop the guts muscle from receiving optimum blood offer. it is important to recollect that, those symptoms don't seem to be common with CAD, they'll occur.



The most common symptoms of CAD are.

- **Shortness of breath:** If you've got too little blood flow within the coronary vessels, you'll feel that you simply cannot catch your breath, cannot get enough air, or cannot breathe. This sensation is commonly represented as symptom. It's additional probably to occur or worsen with workout or emotional stress. Sometimes, shortness of breath might not be thus obvious, and it will cause you to feel as if you are doing not have energy or endurance.<sup>[8]</sup>
- **Chest discomfort:** usually, too little blood flow to your coronary arteries will manifest as indigestion-like chest discomfort. In general, true dyspepsia (not caused by CAD) ought to occur shortly once consumption and will worsen once you square measure during a lying down position.
- **Dizziness/lightheadedness:** you'll expertise intermittent lightheadedness or vertigo if you've got CAD. this is often additional probably to accompany workout, however it will happen at any time.
- **Lack of energy:** a way of diminished energy and frequent or sudden fatigue might occur with CAD. this is often a very regarding warning call if you've got different symptoms of CAD similarly, however it will be the sole symptom.<sup>[9]</sup>
- **Angina:** Stable angina is outlined by tightness and pressure, that is most intense on the left facet of the chest or behind the os, and will involve the jaw and left shoulder. With CAD, angina might occur for some minutes and resolve on its own, or might worsen over the course of minutes, that is that the sign of a MI (heart attack). many folks United Nations agency have a coronary failure as a complication of CAD recall having had transient episodes of pain over the previous months. Advanced CAD will turn out angina if your muscular tissue briefly doesn't get enough blood flow through the coronary arteries. Stable angina happens during a nearly certain fashion, for example, with workout or throughout times of severe stress, and customarily implies that a plaque has become giant enough to supply a partial obstruction of a arteria.<sup>[10]</sup>

Atypical symptoms of CAD don't seem to be as wide recognizable. those who expertise these symptoms may not even mention them to the doctor, even at a frequently regular check-up. this could result in incomprehensible diagnoses, inadequate medical care, and worse outcomes.

Atypical symptoms of CAD include

- **Unstable angina:** Unstable angina is any new angina, angina that happens at rest, or angina that happens with less workout than antecedently caused the angina (e.g. you'll are ready to walk 5 blocks before developing pain and currently you develop it once walking 2 blocks). If you've got unstable angina, you're at high risk of developing a complete occlusion of the arteria, resulting in a coronary failure.<sup>2[11]</sup>
- **Atypical chest pain:** The pain of angina is characteristically represented as pressure, or a tight, compression sensation. however it should conjointly manifest as a hot or burning sensation and it will be set within the back, shoulders, arms, or jaw. Women, especially, square measure additional probably to expertise atypical pain as a results of CAD, and, some girls might not have chest discomfort in the slightest degree. Instead, they will expertise tingling or symptom of the left facet of the chest or arm; a inflammatory disease is additionally a possible atypical presentation, particularly in girls.<sup>[12]</sup>
- **Palpitations:** A fast or irregular heartbeat might want a thumping or quivering sensation and is commonly amid vertigo or lightheadedness.
- **Silent heart attacks:** sometimes, heart attacks square measure characterised by distressing pain and shortness of breath.<sup>[13]</sup>

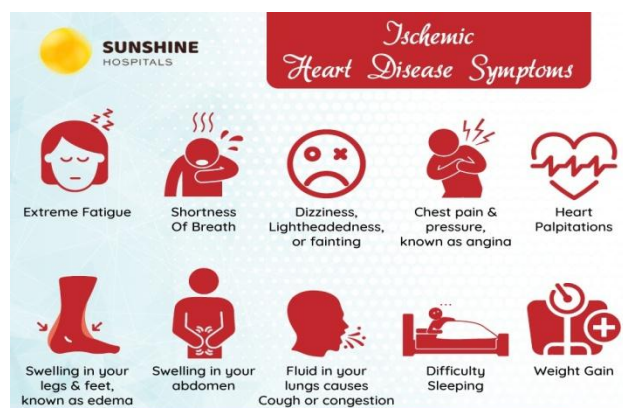


FIG 5: Symptoms of ISH.

## COMPLICATIONS

Following are the resultant complications of CAD are.

- **Chest pain (angina):** The narrow coronary arteries do not supply enough blood to heart(especially, during physical activity),thus causing chest pain or shortness of breath.
- **Heart attack:** Breakdown of plaque triggers formation of a blood clot at the site. This clot completely blocks the artery resulting in a heart attck.

- **Heart failure:** This condition develops when the heart becomes too weak to pump enough blood for fulfilling body's requirements. This happens when some areas of the heart are chronically deprived of oxygen and nutrients or if the patient has suffered a heart attack in the past.
- **Abnormal heart rhythm (arrhythmia):** Improper blood supply to the heart or damage to heart tissue can interfere with your heart's electrical impulses, causing abnormal heart rhythms.<sup>[14]</sup>

## DIAGNOSIS

The doctor can raise questions about your anamnesis, do a physical examination and order routine blood tests. He or she might recommend one or a lot of diagnostic tests in addition, including.

**Electrocardiogram (ECG):** Associate in Nursing cardiogram records electrical signals as they travel through your heart. Associate in Nursing graphical record will usually reveal proof of a previous heart failure or one that is ongoing.

**Echocardiogram:** Associate in Nursing sonogram uses sound waves to supply pictures of your heart. throughout Associate in Nursing sonogram, your doctor will confirm whether or not all elements of the center wall area unit contributory unremarkably to your heart's pumping activity.<sup>[15]</sup>

Parts that move frail might are broken throughout a heart failure or be receiving insufficient O. this might be a symptom of arteriacoronariaunwellness or different conditions.

**Exercise assay:** If your signs and symptoms occur most frequently throughout exercise, your doctor might raise you to steer on a treadmill or ride a stationary bike throughout Associate in Nursing graphical record. Sometimes, Associate in Nursing sonogram is additionally done whereas you are doing these exercises. this is often known as a stress echo. In some cases, medication to stimulate your heart is also used rather than exercise.<sup>[16]</sup>

**Nuclear assay:** This take a look at {is similar|is Associate in Nursingalogous|is comparable} to an exercise assay however adds pictures to the graphical record recordings. It measures blood flow to your cardiac muscle at rest and through stress. A tracer is injected into your blood, and special cameras will sight areas in your heart that receive less blood flow.

**Cardiac catheterization and X-ray picture:** throughout internal organ catheterization, a doctor gently inserts a tube into Associate in Nursing artery or vein in your groin, neck or arm and up to your heart. X-rays area unit wont to guide the tube to the proper position. Sometimes, dye is injected through the tube. The dye helps blood vessels show up higher on the photographs and descriptions any blockages.

If you have got a blockage that needs treatment, a balloon will be pushed through the tube and inflated to enhance the blood flow in your coronary arteries. A mesh tube (stent) is usually wont to keep the expanded artery open.<sup>[17]</sup>

**Cardiac CT scan:** A CT scan of the center will facilitate your doctor see metallic element deposits in your arteries which will slim the arteries. If a considerable quantity of metallic element is discovered, arteriacoronariaunwellness is also possible.

A CT coronary X-ray picture, during which you receive a distinction dye that's given by IV throughout a CT scan, will manufacture elaborate pictures of your heart arteries.

## PLAN OF TREATMENT

Your doctor will select from a variety of medicines, together with statins, niacin, fibrates and steroid sequestrants. Aspirin. Your doctor could suggest taking a daily anodyne or alternative blood agent. this could scale back the tendency of your blood to clot, which can facilitate stop obstruction of your coronary arteries.

Various medication is accustomed treat arterial blood vessel illness, including.

- **Cholesterol-modifying medications:** These medications scale back (or modify) the first material that deposits on the coronary arteries. As a result, steroid alcohol levels — particularly beta-lipoprotein (LDL, or the "bad") steroid alcohol — decrease.
- **Beta blockers:** These medication slow your pulse rate and reduce your pressure, that decreases your heart's demand for O. If you've got had a attack, beta blockers scale back the danger of future attacks.
- **Calcium channel blockers:** These medication is also used with beta blockers if beta blockers alone are not effective or rather than beta blockers if you are not ready to take them. These medication will facilitate improve symptoms of pain.

- **Ranolazine:** This medication could facilitate individuals with pain (angina). it's going to be prescribed with a beta-adrenergic blocking agent or rather than a beta-adrenergic blocking agent if you cannot take it.
- **Angiotensin-converting protein (ACE) inhibitors and Hypertensin receptor blockers (ARBs).** These similar medication decrease pressure and should facilitate stop progression of arterial blood vessel illness.

Sometimes a lot of aggressive treatment is required. Here are some options.

- **Angioplasty and tube placement (percutaneous coronary revascularization)**

Your doctor inserts a protracted, skinny tube (catheter) into the narrowed part of your artery. A wire with a deflated balloon is skillful the tubing to the narrowed space. The balloon is then inflated, press the deposits against your artery walls. A tube is usually left within the artery to assist keep the artery open. Most stents slowly unleash medication to assist keep the arteries open.

- **Coronary artery bypass surgery**

A medico creates a graft to bypass blocked coronary arteries employing a vessel from another part of your body. this enables blood to flow round the blocked or narrowed arterial blood vessel. as a result of this needs heart surgery, it's most frequently reserved for those who have multiple narrowed coronary arteries.<sup>[18]</sup>

## CONCLUSION

CAD is extremely rife in world. At the arrival of the new millennium, we tend to square measure very unclear concerning the important situation. Alongside the classical risk factors, genetic make-up and environmental factors distinctive to our population could exist. we've got no longer to lose. Large-scale, preferably, nation-wide survey and clinical analysis ought to be conducted to determine the various aspects of CAD in world. The information on the market thereby, would facilitate to formulate national policy to combat the deadly epidemic a lot of with efficiency in future. Coronary roentgenography falls in need of the assessment of intermediate lumen lesions. Current tips take into account aphysiologic assessment by FFR or iFR the most effective thanks to assess the useful significance of a lumen lesion. Most proofs supports FFR, however the studies were solely experimental, and only one used the present zero.80 cut-off. &e best approach for LM lesions with AN FFR of zero.75–≤0.80 remains somewhat debatable. iFR is promising since downstream illness is common in patients with lumen illness and FFR is additional difficult to interpret within the setting of serial

lesions. & outcome of AN iFR-based revascularization strategy has been shown to be noninferior to AN FFR-based strategy, but in the setting of a lumen lesion, information area unit restricted to at least one experimental study. many studies area unit current, just like the iLITRO and our own multicenter PHYNAL register (Prospective Left Main Physiology Registry), however solely a randomised trial will confirm noninferiority of AN iFR-based revascularization strategy. once confronted with discordant results of iFR and FFR, following one result over the opposite remains controversial however there aren't any clear indications that following the iFR end in such a case is inferior. Although physiology aids within the higher cognitive process with reference to revascularization, one must keep aware that the natural history of coronary atherosclerosis lesions is advanced and physiological assessment with FFR or iFR cannot fully predict outcome, whether or not a stent is performed or not. & therefore, if one decides to defer a lumen lesion, shut followup is usually recommended. Given the present proof and guidelines given on top of, we have a tendency to gift our approach once confronted with AN intermediate lumen lesion, while not previous proof of connected ischaemia.<sup>[19]</sup>

## REFERENCES

1. Md Sayed Ali Sheikh, Alduraywish, Almaeen, Mubarak Alruwali, Raed Alruwaili, Basil Mohammed Alomair, Umme Salma, Gomaa Mostafa Hedeab, Najeebullah Bugti, and Ibrahim A. M. Abdulhabeeb, 2021.
2. Peter Kayaert, Mathieu Coeman, Sofie Gevaert, Michel De Pauw, and Steven Haine: Physiology-Based Revascularization of Left Main Coronary Artery Disease, 2021.
3. Anthony G. Matta, Thibault Lhermusier, Francisco Campelo Parada, Frederic Bouisset, Ronan Canitrot, Vanessa Nader, Ste'phanie Blanco, Meyer Elbaz, Jerome Roncalli, and Didier Carrie': Impact of Coronary Artery Disease and Percutaneous Coronary Intervention on Transcatheter Aortic Valve Implantation, 2021.
4. Mark G. Rabbat, 1 Shyam Ramchandani, and William E. Sanders Jr.: Cardiac Phase Space Analysis: Assessing Coronary Artery Disease Utilizing Artificial Intelligence, 2021.
5. John Papanikolaou, Abdulrahman Alharthya, Nikolaos Platogiannisa, Abdullah Balhamara, Saleh A. Alqahtanib, Ziad A. Memishc and Dimitrios Karakitsos: Spontaneous coronary artery dissection in a patient with COVID-19, 2020.



6. Mauricio Montemezzo, Ahmed AlTurki, Fabio Stahlschmidt, Marcia Olandoski, Jean Rodrigo Tafarel, and Dalton Bertolin Precoma: Nonalcoholic Fatty Liver Disease and Coronary Artery Disease: Big Brothers in Patients with Acute Coronary Syndrome, 2020.
7. Hendrik Lapp, Marcel Keßler, Thomas Rock, Franz X. Schmid, Dong-In Shin, Alexander Buße, Heinrich G. Klues, and Christian Blockhaus: Ventricular Rupture due to Myocardial Infarction without Obstructive Coronary Artery Disease, 2020.
8. Ping Zhang, Tao Liang, Yao Chen, Xuan Wang, Tianlong Wu, ZhixinXie, JianfangLuo, YanhongYu, and Huimin Yu: Circulating ExosomalmiRNAs as Novel Biomarkers for Stable Coronary Artery Disease, 2020.
9. Xinhua Wua, Yong-Jian Gengb, Zhangrong Chena, Mayil S. Krishnamc, Robert Detranoc, Hong Liua, Wei Yanga, Tianzhao Ouyanga, Yu Donga, Ying Yanga and Shiquan Kuanga: Pulse pressure correlates with coronary artery calcification and risk for coronary heart disease: a study of elderly individuals in the rural region of Southwest China, 2019.
10. Rupert Bauersachs, Uwe Zeymer, Jean-Baptiste Brière, Caroline Marre, Kevin Bowrin and Maria Huelsebeck: Burden of Coronary Artery Disease and Peripheral Artery Disease: A Literature Review, 2019.
11. Zhen Wang, Di Ye, Jing Ye, Menglong Wang, Jianfang Liu, Huimin Jiang, Yao Xu, Jishou Zhang, Jiangbin Chen,<sup>1,2,3</sup> and Jun Wan: ADAMTS-5 Decreases in Coronary Arteries and Plasma from Patients with Coronary Artery Disease, 2019.
12. Abagayle E. Renko, Warren C. Doyle, and Paul W. Sokoloski: Traumatic Takotsubo Cardiomyopathy in a Patient with Extensive Coronary Artery Disease, 2019.
13. Elizabeth G. Nabel, M.D., and Eugene Braunwald, M.D.: A Tale of Coronary Artery Disease and Myocardial Infarction, 2018.
14. Trine R. Larsena, Oke Gerkec, e, Axel C.P. Diederichsend, Jess Lambrechtsenb, Flemming H. Steffenseng, Niels P. Sandf, h, LotteS aabyd, Steen Antonsena and Hans Mickleyd: The association between uric acid levels and different clinical manifestations of coronary artery disease, 2018.
15. ZhengxiXu, Hanning Liu, Cheng Sun, Ke Si, Yan Zhao, and Zhe Zheng: Association between a Genetic Risk Score Based on Single Nucleotide Polymorphisms of Coronary Artery Disease-Related Genes and Left Main Coronary Artery Disease, 2018.
16. Qurat-ul-ainMastoi, Teh Ying Wah, Ram Gopal Raj, and UzairIqbal: Automated Diagnosis of Coronary Artery Disease, 2018.

17. Heng Lu,<sup>1</sup> Yi Chen, and Linlin Li: Metabolic Pathway Genes Associated with Susceptibility Genes to Coronary Artery Disease, 2018.
18. Bernd Stratmann, Katrin Richter, Ruichao Wang, Zhonghao Yu, Tao Xu, Cornelia Prehn, Jerzy Adamski, Thomas Illig, Diethe Im Tschoepe, and Rui Wang-Sattler: Metabolomic Signature of Coronary Artery Disease in Type 2 Diabetes Mellitus, 2017.
19. Xiaoyan Min, Miao Lu,<sup>1</sup> Su Tu, Xiangming Wang, Chuanwei Zhou, Sen Wang, Sisi Pang, Jin Qian, Yiyue Ge, Yan Guo, Di Xu, and Kejiang Cao: Serum Cytokine Profile in Relation to the Severity of Coronary Artery Disease, 2017.