

TINEA CORPORIS RELIEF: A HOMOEOPATHIC REPERTORY APPROACH

Dr. Navita Sharma¹, Dr. Shahana Shah^{2*}, Dr. Aanchal Budhiraja²,
Dr. Devendra Singh², Dr. Soumya Singh² and Dr. Vikrant Rana³

¹Assistant Professor, Department of Repertory, Dr. M.P.K. Homoeopathic Medical college Hospital & Research center, a Constituent College of Homoeopathy University, Jaipur, 302029.

²MD Scholar, Department of Repertory, Dr. M.P.K. Homoeopathic Medical College Hospital & Research Center, a Constituent College of Homoeopathy University, Jaipur, 302029.

³MD Scholar, Department of Organon of Medicine and Homoeopathy Philosophy, Dr. M.P.K. Homoeopathic Medical College Hospital & Research Center, A Constituent College of Homoeopathy University, Jaipur, 302029.

Article Received on
26 July 2024,

Revised on 15 August 2024,
Accepted on 04 Sept. 2024

DOI: 10.20959/wjpr202418-33875



*Corresponding Author

Dr. Shahana Shah

MD Scholar, Department of
Repertory, Dr. M.P.K.
Homoeopathic Medical
College Hospital &
Research center, a
Constituent College of
Homoeopathy University,
Jaipur, 302029.

ABSTRACT

Tinea corporis usually appears as a clearly defined, sharply bordered, oval or circular patch or plaque that is mildly red and scaly, with a raised, prominent edge.^[1] In this case report we present a case of Tinea corporis, presenting with complaints of multiple eruptions in rings with marked edges on nape of neck and right hand, severe itching and burning of skin for 2 months. Itching aggravated at night and from scratching. After complete case taking and proper repertorisation than on the basis of totality of symptoms *Sulphur* 30/1dose stat early morning empty stomach followed by *Rubrum* 30/tds was prescribed and the prognosis of the case is good and the patient get cure.

KEYWORDS: Homoeopathy, Tinea corporis, ringworm, *Sulphur*.

INTRODUCTION

Tinea corporis is a superficial fungal skin infection caused by dermatophytes that affects the body. It is found globally and is specifically identified by its location on the trunk, neck, arms, and legs.

Different names are used for dermatophyte infections depending on the area of the body they affect, such as tinea capitis for the scalp, tinea faciei for the face, tinea manuum for the hands, tinea cruris for the groin, and tinea pedis for the feet.

Dermatophytes cause superficial fungal skin infections, known as dermatophytoses, by attaching to the keratinized tissue of the skin. The fungi responsible for tinea corporis come from the genera *Trichophyton*, *Epidermophyton*, and *Microsporum*. Dermatophytes are the most common agents of superficial fungal infections. Factors such as excessive heat, high humidity, and tight clothing are associated with more severe and frequent occurrences of the disease.

Tinea corporis lesions spread outward from a central point, creating a clear center with mild scaling, which forms a "ring" shape, hence the term "ringworm." Diagnosis is typically made clinically through a detailed history and physical examination, though testing can be used to confirm it. Skin scrapings examined under a microscope with a potassium hydroxide (KOH) preparation will show septate, branching hyphae. Fungal culture is another method for confirmation, with Sabouraud dextrose agar (containing 1% glucose, 4% mycological peptone, and water) being the most commonly used isolation medium.^[2]

PATIENT INFORMATION

A 30 years old male, who is labour, attended outpatient (OPD) Of Girendra Pal Homoeopathic Hospital and Research Centre with multiple eruptions in rings with marked edges on nape of neck and right hand, severe itching and burning of skin for 2 months.

HISTORY OF PRESENTING COMPLAINT

Patient was apparently well before 2 months gradually he started multiple papular eruptions in rings with marked edges on nape of neck and right hand, severe itching and burning of skin for 2 months. Itching aggravated at night and from scratching.

PAST HISTORY- nothing specific.

FAMILY HISTORY- Mother and Father are healthy & alive, 2 brother and 1 sister all were apparently healthy and alive, wife is also healthy and alive.

PERSONAL HISTORY- 1 packet of gutkha per day.

PHYSICAL GENERAL

- Thermal- hot
- Cravings- sweet
- Aversions- nothing specific

- Appetite- 2-3 meals/day, ravenous hunger
- Thirst- 3-4 lit/day
- Stool- 2 times in a day
- Urine- 4-5 times in a day and 0-1 time in night
- Perspiration- profuse
- Sleep- 8-9 hours/day, refreshed

MENTAL GENERAL- forgetfulness.

INVESTIGATION-Advice- KOH test

(Note: but patient denied to go for it.)

PHYSICAL EXAMINATION

Inspection	Multiple eruptions in rings on nape of neck and right hand, papular eruptions on edges and centre of rings, redness.
-------------------	--

DIAGNOSIS- Tinea corporis.

ANALYSIS AND EVOLUTATION OF SYMPTOMS

Mental general	Physical general	Common
forgetful	Thermal- hot Appetite- ravenous hunger Perspiration- profuse	Multiple eruptions in rings with marked edges on nape of neck and right hand for 2 months, Itching and burning Aggravation at night, from scratching

EVALUATION AND ANALYSIS OF SYMPTOMS

Forgetful+

Thermally hot ++

Ravenous hunger+

Profuse perspiration +

Multiple eruptions in rings with marked edges on nape of neck and right hand for 2 months++

Itching and burning +++

Aggravation at night, from scratching++

MIASMATIC ANALYSIS

Symptoms	Psora	Syphilis	Sycosis
forgetful	✓		
Ravenous hunger	✓		
Profuse perspiration	✓		
Herpetic eruptions	✓	✓	
Itching and burning	✓	✓	
Aggravation at night	✓		
Aggravation from scratching	✓		

Miasmatic evaluation for the presenting symptoms was done with the help of the chronic disease by Dr. Hahnemann showed the pre dominance of psora miasm.^[3]

TOTALTY OF SYMPTOMS

Forgetful

Thermally hot

Ravenous hunger

Profuse perspiration

Multiple eruptions in rings with marked edges on nape of neck and right hand for 2 months

Itching and burning

Aggravation at night, from scratching

REPERTORIAL TOTALITY-

MIND- forgetful (see memory)

STOMACH- Desires- sweets

STOMACH- Appetite- ravenous, canine, excessive

PERSPIRATION- Profuse

SKIN- Eruptions- herpetic

SKIN- Itching- night

SKIN- Itching- burning

SKIN- Itching- scratching- agg.

SKN- Eruptions- herpetic- red

REPERTORISATION

Filters Applied: Sort by Totality
Symptoms: 9
Remedies: 266

Remedy Name	Sulph	Lyc	Merc	Ara	Rhus-I	Si	Calc	Bry	Carbo-s	Caus
Totality	22	20	18	18	17	17	16	15	15	14
Symptoms Covered	8	7	9	8	7	7	7	7	5	7
Kingdom	Minerals	Plants	Minerals	Minerals	Plants	Minerals	Minerals	Plants	Minerals	Minerals
[Kent] [Mind] Forgetful (see Memory): (153)	2	3	3	1	2	1	2	1	3	2
[Kent] [Stomach] Desires: Sweets: (136)	3	3	1	1	2		2	2		
[Kent] [Stomach] Appetite: Ravenous, canine, excessive	3	3	2	3	2	3	3	2	3	2
[Kent] [Perspiration] Profuse: (133)	2	3	3	3	2	3	3	3	3	2
[Kent] [Skin] Eruptions: Herpetic: (109)	3	3	3	3	3	3	3	2	3	2
[Kent] [Skin] Itching: Night: (44)	3		1			2			3	2
[Kent] [Skin] Itching: Burning: (120)	3	3	2	3	3	3	2	3		2
[Kent] [Skin] Itching: Scratching: App: (88)	3		1	3	3	2	1			2
[Kent] [Skin] Eruptions: Herpetic: Red: (19)		2	2	1				2		

Figure-1: Repertorisation of case from Kent's repertory using ZOMOELO ELITE.^[4]

JUSTIFICATION

And after considering “lectures on Homoeopathic Materia Medica by Dr J T Kent and Pocket manual of Homoeopathic Materia medica and repertory by William Boericke” the Sulphur is hot and patient has all sorts of eruptions. There are vesicular, pustular, furuncular, scaly eruptions, all attended with much itching, some of them with discharge and suppuration. Every part burns, burning where there is congestion, burning of the skin, burning here and there. Nightly complaints are feature. Lycopodium has painful ulcer, sloughing ulcer beneath the skin, abscesses beneath the skin, cellular troubles. Mercurius skin almost constantly moist. Persistent dryness of the skin contraindicates mercurius. Profuse perspiration without relief. Creeping chilliness.^[5,6]

After complete case taking and case processing procedure, we prescribed medicine on the basis of repertorisation from Kent's Repertory Sulphur 30/1Dose stat early morning empty stomach followed by Rubrum 30/tds was chosen for 7 days in first visit.

GENERAL MANAGEMENT: The patient was advised to maintain hygiene, avoid wearing tight clothing.

FOLLOW UPS

Date	Main symptoms/findings	Medicine prescribed
04/03/2024	multiple eruptions in rings with marked edges on nape of neck and right hand, severe itching and burning of skin for 2 months. Itching aggravated at night and from scratching. Thermally hot, Patient is forgetful, Profuse perspiration, craving for sweet	<i>Sulphur</i> 30/1D/stat/EMES <i>Rubrum</i> 30/TDS for 7 days
11/03/2024	Mild itching decrease	<i>Rubrum</i> 30/TDS for 7 days
18/03/2024	Itching and dryness decreases, Eruptions decreases And generals are improving.	<i>Rubrum</i> 30/TDS for 14 days
02/04/2024	Itching aggravates, with burning eruptions	<i>Rubrum</i> 30/TDS for 14 days
15/04/2024	SQ	1. <i>Sulphur</i> 30/1D/stat/EMES 2. <i>Rubrum</i> 30/TDS for 14 days
29/04/2024	Itching and burning decreases and eruptions decreases. Forgetfulness getting improved	<i>Rubrum</i> 30/TDS for 30 days
27/05/2024	Better	<i>Rubrum</i> 30/TDS for 30 days

DISCUSSION

At first consultation, patient approached with complaints of multiple papular eruptions in center and margins of rings, marked edges, severe itching and burning aggravated in night and after scratching. After detailed case taking, we considered case processing using Kent repertory because this case has marked generals, and the Kent's repertory is general repertory based on general to particular philosophy. It is of logico-utilitarian type of repertory. On the basis of totality of symptoms and considering various Materia Medica like lectures on Homoeopathic Materia Medica by Dr J T Kent, Pocket manual of Homoeopathic Materia medica and Repertory by Williams Boericke, *Sulphur* 30/1Dose/stat early morning empty stomach *Rubrum* 30/TDS for 7 days was given for 7 days. The case was followed up and medicine repeated as per the principle laid down in Organon of Medicine. In this case gives quick and gentle relief in presenting complaints, and also improve their quality of life with mental well-being as well. No recurrence seen in last 2 months.^[5,6]

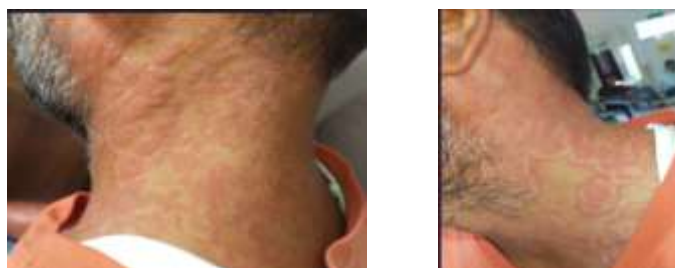


Figure A- (04/03/2024)



Figure B- (27/05/2024)

CONCLUSION

The principle of Homoeopathy is the “similia, similibus, curentur” which says that a disease can be cured by a medicine, which in healthy people is able to produce a condition that resembles the disease. Homoeopathy works in gentle manner and with permanent cure. As the above case evidenced that it works better in skin diseases with very good results.

REFERENCES

1. <https://www.ncbi.nlm.nih.gov/pmc/articles/PMC7375854/>
2. <https://europepmc.org/article/NBK/nbk544360>
3. Patel, R. (n.d.). *The Art of Case Taking and Practical Repertorization in Homoeopathy*. <https://www.bagchee.com/books/BB811/the-art-of-case-taking-and-practical-repertorization-in-homoeopathy>
4. HomopathZomeo all about homeopathy is on Zomeo (no date a) homopath.com. Available at: <https://homopath.com/zomeo> (Accessed: 30 January 2024)
5. Kent, J. T. (1989). *Lectures on Homoeopathic Materia Medica*. B. Jain Publishers.
6. Boericke Oe, Boericke W. *New Manual Of Homoeopathic Materia Medica And Repertory*. 2nd ed. New Delhi: Kuldeep Jain for B Jain Publishers, 2003.