

**PHARMACOGNOSTICAL AND PHARMACEUTICAL EVALUATION
OF PANCHATIKTA PANCHAPRASRUTIKA BASTI IN THE
MANAGEMENT OF EK KUSHTHA W.S.R TO PSORIASIS**

Tarjani Vasaiya^{1*}, Rita Khagram² and Harisha C. R.³

¹PG Scholar, Department of Panchakarma, Institute of Teaching and Research in Ayurveda,
Jamnagar.

²Associate Professor, Department of Panchakarma, Institute of Teaching and Research in
Ayurveda, Jamnagar.

³Head, Pharmacognosy Laboratory, Institute of Teaching and Research in Ayurveda,
Jamnagar.

Article Received on
10 February 2025,

Revised on 04 March 2025,
Accepted on 24 March 2025

DOI: 10.20959/wjpr20257-36140



***Corresponding Author**

Tarjani Vasaiya

PG Scholar, Department of
Panchakarma, Institute of
Teaching and Research in
Ayurveda, Jamnagar.

ABSTRACT

Introduction: *Panchatikta Panchaprasrutika Basti* is Mainly indicated in *Kushtha* and *Prameha*. All the Dravyas in *Panchatikta Panchaprasrutik Basti* are *Tiktarasatmak* which is treatment for *kushtha*. *Tikta Rasapradhan Dravyas* are *Deepak, Pachak, lekhana* and *Vishaghana* in nature and destroys *Kleda*. The effect of *Tikta rasa* on skin is *Kandughna, Kushthaghna, Dahaprashamana*. *Acharya charaka* has mentioned the effectiveness of *Panchatikta Panchaprasrutika Basti* in the treatment of *Kushtha*. Ayurvedic text does not have direct reference towards a single disease which can be compared with the modern disease “Psoriasis”. Psoriasis is chosen as the *Ek kushtha* because it is more comparable to psoriasis than any other type of *Kushtha*. **Materials and Method:** Raw drugs of *Panchatikta Panchaprasrutika Basti* as per reference of *Charaka Samhita* were obtained from Pharmacy of ITRA, Jamnagar, Gujarat. The freshly

prepared final product was then subjected to pharmacognostical and physicochemical analysis. **Results:** Pharmacognostical study showed the presence of certain identifying characteristics of the ingredients of *Panchatikta Panchaprasrutika Basti* i.e., *Patol, Nimba, Bhunimba, Rasna* etc. In pharmaceutical study, the preliminary physicochemical analysis showed solid content of & specific gravity of. **Conclusion:** The Pharmacognostical and

physicochemical analysis of *Panchatikta Panchaprasrutika Basti* confirmed the purity and genuineness of formulation.

KEYWORDS: *Panchatikta Panchaprasrutika Basti*, Psoriasis, *Eka Kushtha*, Pharmacognosy, Pharmaceuticals.

INTRODUCTION

Panchakarma is proven as unique therapeutic procedure of its preventive, promotive, prophylactic & rejuvenative properties. *Basti* is an important procedure among *Panchakarma*. All Acharyas have highlighted the importance of *Basti* as *Ardhachikitsa*, some Acharyas have even gone to extent of ascribing it as *Poornachikitsa*.^[1] There are different types of *Basti* explained in ayurveda classics. *Panchatikta Panchaprasrutika Basti* is mentioned by *Acharya Charaka* while mentioning various *Prasrutika Basti*. Dose of *Panchatikta Panchaprasrutika Basti* is 5 *Prasruta* i.e. Approx 500 ml for single dose administration.

All the skin diseases in Ayurveda have been discussed under the broad heading of “*Kushtha*”. Which are further divided in *Maha Kushtha* and *Kshudra Kushtha*.^[2] *Ek kushtha* is considered one of the *Kshudra Kushtha* in Ayurvedic texts. *Panchatikta Panchaprasrutika Basti* is Specially indicated in *kushtha vyadhi*. Ayurvedic text does not have direct reference towards a single disease which can be compared with the modern disease “psoriasis”. Several researchers and scholars have compared the psoriasis with *Kiṭibha*, *Charmadala*, *Maṇḍala*, *Sidhma* and *Ek kuṣhṭha* in their theses and research articles. In this study Psoriasis is chosen as the *Ek kushtha* because it is more comparable to psoriasis than any other type of *Kushtha*. Psoriasis is a chronic proliferative and inflammatory condition of the skin. It is characterized by erythematous plaques covered with silvery scales, particularly over the extensor surfaces, scalp, and lumbosacral region.^[3]

Panchatikta Panchaprasrutika Basti has *Saindhava*, *Goghrita*, *Kwath* of *Patola*, *Nimba*, *Rasna*, *Bhunimba*, *Saptaparna* and *Churna* of *Sarshapa*. All the *Dravyas* in *Panchatikta Panchaprasrutika Basti* are *Tiktarasatmak* which is treatment for *kushtha*. *Tikta Rasapradhan Dravyas* are *Deepak*, *Pachak*, *lekhana* and *Vishaghana* in nature and destroys *Kleda*. The effect of *Tikta rasa* on skin is *Kandughna*, *Kushthaghna*, *Dahaprashamana*. *Acharya Charaka* has mentioned the effectiveness of *Panchatikta Panchaprasrutika Basti* in the treatment of *Kushtha*.

MATERIALS AND METHODS

Collection, Identification and Authentication of raw drugs

The raw materials of Basti was obtained from Pharmacy ITRA, Jamnagar, and some non-available drugs were collected from local market of Jamnagar. All the raw drugs were identified and authenticated in the pharmacognocny lab of ITRA, Jamnagar. The ingredients, quantity and parts used in the preparation of the final products are mentioned in **Table no. [1]**.

The final product i.e., *Panchatikta Panchaprasrutika Basti* was prepared freshly at Basti room, Panchakarma dept, ITRA, Jamnagar. Once formulation was ready, it was subjected to pharmacognostical and pharmaceutical evaluation at pharmacognocny and pharmaceutical lab ITRA, Jamnagar respectively.

Preparation of Basti

First of all, Saindhava was taken and triturated in a clean mortar with pestle and powdered. after that go ghrita was added slowly continuing trituration. after mixing it well Kalka of Sarshapa was added slowly and triturated. When contents are mixed well, Kwatha was added little by little and mixed properly to make homogenous emulsion The contents were finally filtered and made lukewarm if required in hot water bath and was administered.

Pharmacognostical study

The pharmacognostical study comprises of organoleptic study and microscopic study of finished product scientifically studied at pharmacognocny lab, ITRA, Jamnagar, Gujarat.

Organoleptic study

The Organoleptic characters of Ayurvedic formulations are very important and give the general idea regarding the genuinity of the sample. Organoleptic parameters like Taste, Colour, Odour and Touch were scientifically studied.

Physico chemical analysis

Panchatikta Panchaprasrutika Basti was analyzed using various standard physicochemical parameters such as loss on drying, water-soluble extract, alcohol extract etc.

RESULTS

Organoleptic characters of *Panchatikta Panchaprasrutika Basti*

Organoleptic characters contents of *Panchatikta Panchaprasrutika Basti* like Taste, Colour, Odour and Touch were recorded and shown in **Table no. [2]**.

Physico chemical analysis of *Panchatikta Panchaprasrutika Basti*

Physico chemical parameters of *Panchatikta Panchaprasrutika Basti* are shown in

Table no. [3]

Microscopic characters of *Panchatikta Panchaprasrutika Basti*

Diagnostic characters of *Panchatikta Panchaprasrutika Basti* under the microscope showed Annular & Spiral vessel of *Patola*, Crystal fiber of *Nimba*, Vessels of *Rasna* etc. All these are showed in **Plate no. [1]**

Table no. 1: Ingredients of *Panchatikta Panchaprasrutika Basti*.

<i>Kwatha Dravya</i>				
<i>No.</i>	<i>Sanskrit name</i>	<i>Latin name</i>	<i>Part used</i>	<i>Proportion</i>
1	<i>Patola</i>	<i>Tricosanthes cucumerina</i>	<i>Patra</i>	400 ml
2	<i>Nimba</i>	<i>Azadirachta indica</i>	<i>Twaka</i>	
3	<i>Bhunimba</i>	<i>Swertia chirayta</i>	<i>Sarvanga</i>	
4	<i>Rasna</i>	<i>Pluchea lanceolata</i>	<i>Patra</i>	
5	<i>Saptaparna</i>	<i>Alatonia scholaris</i>	<i>Twaka</i>	
<i>Kalka Dravya</i>				
6	<i>Sarshapa</i>	<i>Brassica campestris</i>	<i>Seed</i>	40 gm
<i>Others</i>				
7	<i>Goghrita</i>	<i>Butyrum deparatum</i>	-	100 ml
8	<i>Saindhava</i>	<i>Rock salt</i>	-	10 gm

Table no. 2: Organoleptic characters of *Panchatikta Panchaprasrutika Basti*.

Sr. No.	Parameter	Observation
1.	Colour	Yellowish brown
2.	Odour	Characteristic
3.	Taste	Tasteless
4.	Touch	Slippery

Table no. 3: Physico chemical Parameters of *Panchatikta Panchaprasrutika Basti*.

Sr. no	Test	Results
1.	Specific gravity	1.007
2.	Density	1.032178 gm/ml

Plate no. [1] (Fig.1-15) Microphotographs of *Panchatikta Panchaprasrutika Basti*



Fig. 1 Annular and spiral Fig. 2 Prismatic crystals of Fig. 3 Simple trichome of

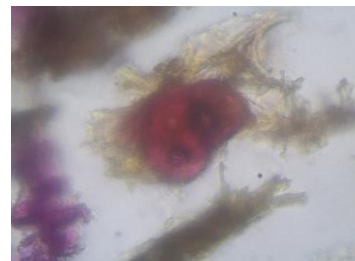
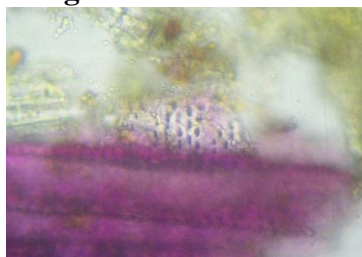
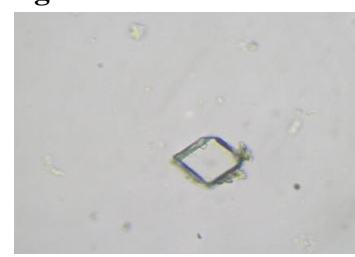
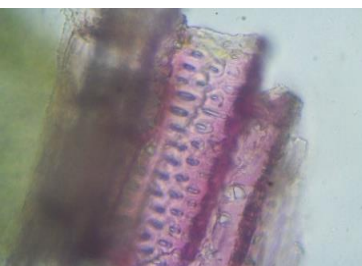
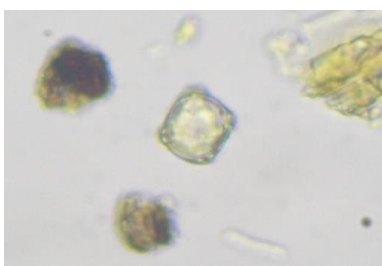
vessels Patol.

**Fig. 4 crystal fiber of Nimba.**

Patol.

**Fig. 5 simple fiber of Nimba.**

Patol.

**Fig. 6 stone cell of Nimba.****Fig.7 Fibres of Rasna.****Fig.8 Starchgrains of Rasna.****Fig. 9 Stone cells of Rasna.****Fig.10 Vessels of Rasna.****Fig.11 Fibres of Saptaparni.****Fig.12 Prismatic crystal of Saptaparni.****Fig.13 Vessels of Saptaparni.****Fig.14 pollen grain of Kiratatikta.****Fig.15 spiral vessels of Kiratatikta.**

DISCUSSION

This confirms the presence of all active ingredients of raw drugs in the final product i.e., Basti. The physico-chemical parameters analysed were found to be within the normal reference range. The physicochemical analysis showed specific gravity as 1.007 and density as 1.032178gm/ml.

CONCLUSION

The pharmacognostical and physicochemical analysis of *Panchatikta Panchaprasrutika Basti* confirmed the purity and genuineness of the drug. Genuineness of drugs is the most important in

present era where there is more adulteration in drug contents. Information acquired from this study may be helpful for further research work.

REFERENCES

1. Agnivesha Charaka Samhita Vidyotini hindi commentary by pt Kashinath Shastri & Dr. Gorakhanath Chaturvedi published by Chaukhambha Bharati Academy. Charaka Samhita Siddhishthana Chapter-1/39-40, 893.
2. Agnivesha Charaka Samhita Vidyotini hindi commentary by pt Kashinath Shastri & Dr. Gorakhanath Chaturvedi published by Chaukhambha Bharati Academy. Charaka Samhita Chikitsasthana Chapter-7/13, 224.
3. Psoriasis Pragya A. Nair; Talel Badri. Psoriasis - PubMed (nih.gov)