

ANALYTICAL METHOD DEVELOPMENT AND VALIDATION OF UNIVARIATE SPECTROPHOTOMETRIC METHODS FOR QUANTIFYING BINARY DRUG COMBINATION IN HYPERTENSIVE CARE

A. Kinnerker, C. Kumbharjuvekar, A. Naik*, Dr. S. Kudchadkar

Department of Pharmaceutical Quality Assurance, Goa College of Pharmacy, Panaji, Goa – 403001.

Article Received on 24 April 2026,
Article Revised on 14 May 2026,
Article Published on 16 May 2026

<https://doi.org/10.5281/zenodo.20205060>

*Corresponding Author

A. Naik

Department of Pharmaceutical
Quality Assurance, Goa College of
Pharmacy, Panaji, Goa - 403001.



How to cite this Article: A. Kinnerker, C. Kumbharjuvekar, A. Naik*, Dr. S. Kudchadkar (2026). Analytical Method Development And Validation of Univariate Spectrophotometric Methods for Quantifying Binary Drug Combination In Hypertensive Care. World Journal of Pharmaceutical Research, 15(10), 905-921.

This work is licensed under Creative Commons Attribution 4.0 International license.

The objective of present research work was to develop a novel, precise, and accurate UV spectrophotometric method based on four approaches: Ratio Subtraction Coupled with Extended Ratio Subtraction Method (RS-ERS), Ratio Subtraction Coupled with Constant Multiplication Method (RS-CM), Ratio subtraction coupled with Spectrum Subtraction (RS-SS) and the Absorption Factor method (AFM) for simultaneous estimation of Azelnidipine and Olmesartan medoxomil in fixed dose combination. The method was validated according to ICH guideline Q2 (R2). For RS-ERSM, RS-CM and RS-SS, the absorbance of Azelnidipine was measured at 258.8nm, and that of Olmesartan medoxomil was measured at 255nm. For AFM, Azelnidipine was measured at 342.2nm, whereas Olmesartan medoxomil was measured at 255nm. The coefficients of correlation were found to be 0.9997 and 0.9995 for Azelnidipine and OLME, respectively, for the RS-ERS, RS-CM

and RS-SS method and for AFM it was found to be 0.999 and 0.9995 for Azelnidipine and Olmesartan medoxomil respectively. Precision studies indicated % RSD values of less than 2% for both intra-day and inter-day measurements. The % recovery was found to be within the accepted criteria, i.e., 98-102%. The assay results met the acceptable pharmacopeial limits

of 90-110%. These methods were further evaluated for their greenness using two assessment tools, namely Agree and complex Gapi.

KEYWORDS: Azelnidipine, Olmesartan medoxomil, Ratio Subtraction Coupled with Extended Ratio Subtraction Method, Ratio Subtraction Coupled with Constant Multiplication Method, Ratio subtraction coupled with Spectrum Subtraction, Absorption Factor Method, ICH Q2 (R2).

INTRODUCTION

AZELNIDIPINE

Azelnidipine is chemically 3-[1-(Diphenylmethyl)-3-azetidiny] 5-isopropyl 2-amino-6-methyl-4-(3-nitrophenyl)-1,4-dihydro-3,5-pyridinedicarboxylate. It is a long-acting calcium channel blocker of the dihydropyridine class, prescribed mainly for hypertension. By inhibiting calcium influx in vascular smooth muscle, it promotes vasodilation, decreases peripheral resistance, and reduces cardiac afterload. Its gradual onset of action ensures sustained blood pressure control with minimal reflex tachycardia, thereby improving both hemodynamic stability and long-term cardiovascular outcomes. It is freely soluble in acetone, soluble in ethyl acetate, slightly soluble in methanol, sparingly soluble in water.

OLMESARTAN MEDOXOMIL

Olmesartan medoxomil (5-methyl-2-oxo-1,3-dioxol-4-yl) methyl 5-(2-hydroxypropan-2-yl)-2-propyl-3-[[4-[2-(2H-tetrazol-5-yl) phenyl] phenyl] methyl] imidazole-4-carboxylate. It is an angiotensin II receptor blocker that is converted in vivo to its active form, Olmesartan. By selectively blocking AT₁ receptors, it prevents angiotensin II-mediated vasoconstriction and aldosterone release, leading to arterial relaxation, reduced vascular resistance, and sustained blood pressure control. It is slightly soluble in methanol, ethanol, practically in-soluble in water.

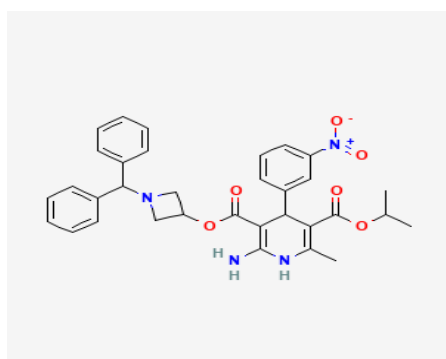


Fig. 1: Chemical structure of Azelnidipine

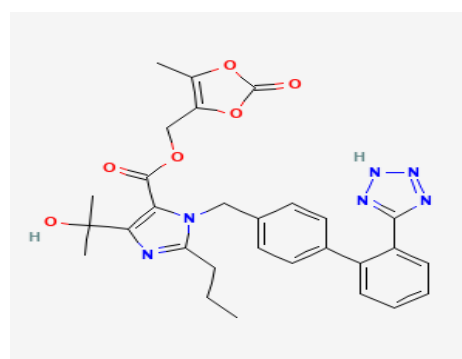


Fig. 2: Chemical structure of Olmesartan medoxomil

A review of the literature indicates that numerous analytical methods have been established for Azelnidipine^[5-11], both as a single drug and in combination with Olmesartan medoxomil^[12-19] or other agents. The reported spectrophotometric approaches include UV^[20-23] and RP-HPLC^[24-26], HPTLC^[27], LC-ESI-MS-MS^[28], UPHPLC^[29], LC MS-MS^[30].

MATERIAL AND METHOD

Instrumentation

A UV visible double beam spectrophotometer (SHIMADZU, model UV- 2700) equipped with a pair of matched quartz cuvettes (1 cm path length) was used for the analysis (spectral bandwidth of 1 nm, scan speed of 400 nm/min and data interval of 0.5nm). All weighing procedures were carried out using Wensar electronic balance (model MAB220). Throughout the study only calibrated glassware was utilized.

Reagents and chemicals

Azelnidipine (AZE) having percent purity (100.37%) and Olmesartan medoxomil (OLME) having percent purity (99.99%) were received as gift samples from Mascot Health Series Pvt. Ltd., Janakpuri, New Delhi and MSN laboratories Pvt. Ltd., Sangareddy, Telangana respectively. HPLC-grade methanol was purchased from Merck Life Science Pvt Ltd. (Mumbai-400 013).

Marketed formulation

"Olmezest-Az 20" tablet manufactured by Sun Pharma Ltd was purchased from local pharmacy. Each tablet contains AZE 8mg and OLME 20mg.

Preparation of solution

(a) Standard Stock Solution of AZE (1000 µg/mL)

A standard stock solution of AZE was prepared by accurately weighing 100 mg of AZE and transferring it into a 100 mL volumetric flask. To this 50 mL of methanol was added to facilitate complete dissolution of the drug. Same solvent was used to make the volume up to the mark, resulting in a solution containing 1000 µg/mL of AZE.

(b) Working Standard Solution of AZE (100 µg/mL)

From the standard stock solution of AZE (1000 µg/mL), 10 mL of aliquot was precisely transferred into a 100 mL volumetric flask. The volume was then made up to the mark with methanol to yield a working standard solution with a concentration of 100 µg/mL.

(c) Standard Stock Solution of OLME (1000 µg/mL)

A standard stock solution of OLME was prepared by accurately weighing 100 mg of OLME and transferring it into a 100 mL volumetric flask. To this 50 mL of methanol was added to facilitate complete dissolution of the drug. Same solvent was used to make the volume up to the mark, resulting in a solution containing 1000 µg/mL of OLME.

(d) Working Standard Solution of OLME (100 µg/mL)

From the standard stock solution of OLME (1000 µg/mL), 10 mL of aliquot was precisely transferred into a 100 mL volumetric flask. The volume was then made up to the mark with methanol to yield a working standard solution with a concentration of 100 µg/mL.

Method 1: Ratio Subtraction And Extended Ratio Subtraction Method (Rs-Ers).^[31]

In a binary mixture of OLME and AZE with overlapping spectra, where AZE shows a more extended spectrum than OLME. The λ_{\max} of OLME and AZE were measured at 255 nm and 258.8 nm, respectively, in a 70:30 water–methanol mixture.

For determination of OLME by Ratio Subtraction (RS)

$$\text{Step 1: } \frac{OLME + AZE}{AZE'} = \frac{OLME}{AZE'} + \frac{AZE}{AZE'} = \frac{OLME}{AZE'} + \text{constant}$$

$$\text{Step 2: } \frac{OLME}{AZE'} + \text{constant} - \text{constant}$$

$$\text{Step 3: } \frac{OLME}{AZE'} \times AZE' = OLME(\text{Recovered spectra})$$

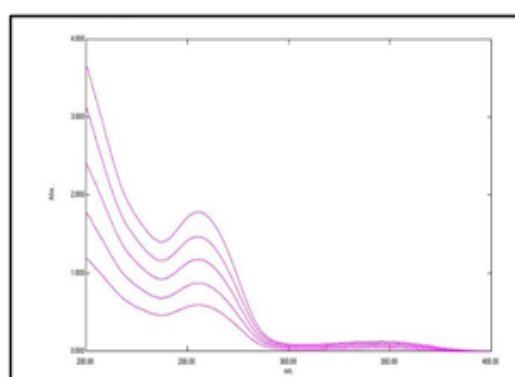
Determination of OLME by RS METHOD

Fig. 3: Zero order spectra of different laboratory prepared mixtures of OLME (10-30µg/mL) and AZE (4-12µg/mL).

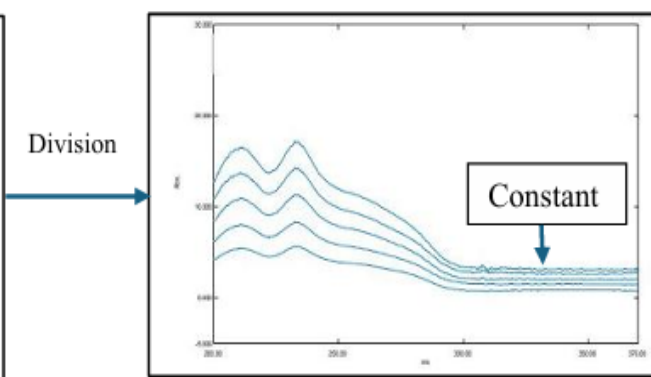


Fig. 4: Ratio spectra of different laboratory prepared mixtures of OLME (10-30µg/mL) and AZE (4-12µg/mL) using AZE 8µg/mL as a divisor (Y').

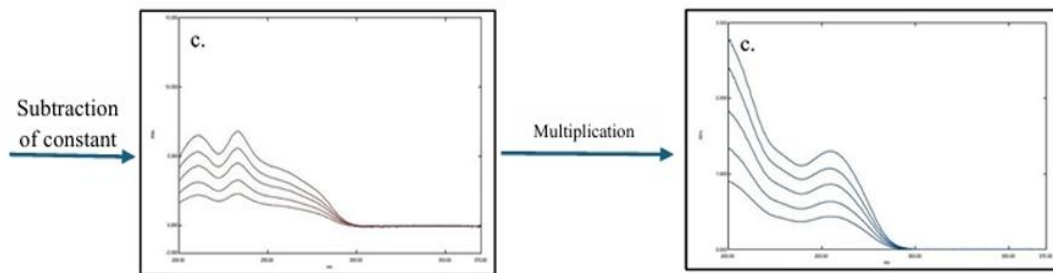


Fig. 5: Ratio spectra of different laboratory prepared mixtures of OLME and AZE after subtraction of constant

Fig.6 zero order spectra of different conc. Of OLME(10-30µg/mL) after multiplication using AZE' (8µg/mL) as a divisor

For determination of AZE by Extended Ratio Subtraction

- Step 1: $\frac{OLME(Recovered\ Spectra)}{OLME'} = constant$
- Step 2: $\frac{OLME + AZE}{OLME'} = \frac{OLME}{OLME'} + \frac{AZE}{OLME'} = \frac{AZE}{OLME'} + constant$
- Step 3: $\frac{AZE}{OLME'} + constant - constant = \frac{AZE}{OLME'}$
- Step 4: $\frac{AZE}{OLME'} \times OLME' = AZE(Recovered\ Spectra)$

Determination of AZE by ERS METHOD

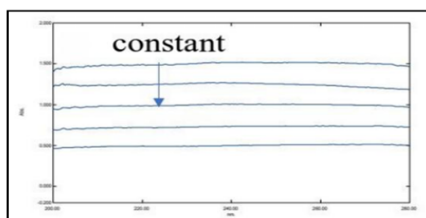


Fig. 7: Ratio spectra of different recovered OLME (10-30µg/mL) using OLME 20µg/mL as a divisor for determination of constant.

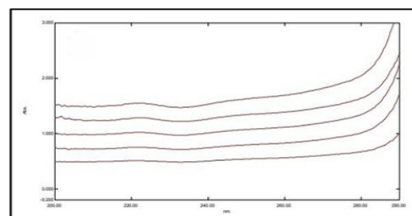


Fig. 8: Ratio spectra of different laboratory prepared mixtures of OLME (10-30µg/mL) and AZE (4-12µg/mL) using OLME 20µg/mL as a diivisor.

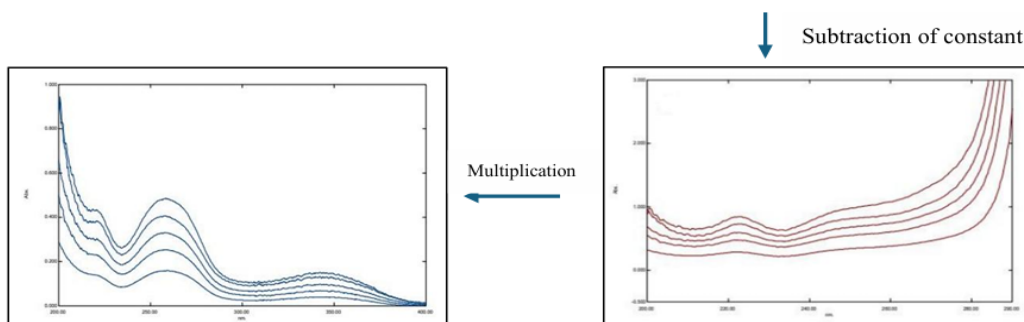


Fig. 9: Zero order spectra of different concentration of AZE (4-12µg/mL) after multiplication using OLME' (20µg/mL) as a divisor

Fig. 10: Ratio spectra of different laboratory prepared mixtures of OLME and AZE after subtraction of constant

Method 2: Ratio Subtraction Method Coupled With Constant Multiplication Method (Rs-Cm).^[32]

The RS-CM method is applied to binary mixtures of OLME and AZE, where AZE shows a more extended spectrum. The λ_{\max} of OLME and AZE were measured at 255 nm and 258.8 nm, respectively, in a 70:30 water–methanol mixture.

For determination of AZE,

$$\text{Step 1: } \frac{OLME + AZE}{AZE'} = \frac{OLME}{AZE'} + \frac{AZE}{AZE'} = \frac{OLME}{AZE'} + \text{constant}$$

$$\text{Step 2: } \text{Constant} \times AZE' = AZE (\text{Recovered Spectra})$$

For determination of OLME,

$$\text{Step 1: } (OLME + AZE) - AZE (\text{Recovered Spectra}) = OLME$$

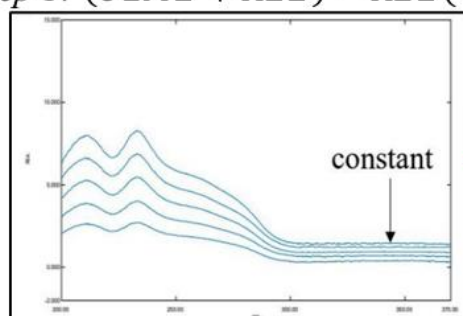


Fig. 11: Ratio spectra of different laboratory prepared mixtures of OLME (10-30 $\mu\text{g/mL}$) and AZE (4-12 $\mu\text{g/mL}$) using AZE' (8 $\mu\text{g/mL}$) as divisor to determine the constant

Multiplication

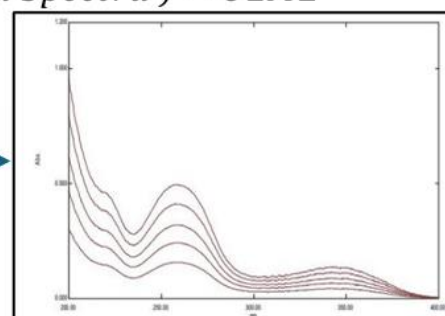


Fig. 12: Zero order spectra of different concentration of AZE9 (4-12 $\mu\text{g/mL}$) obtained after multiplication of constant value

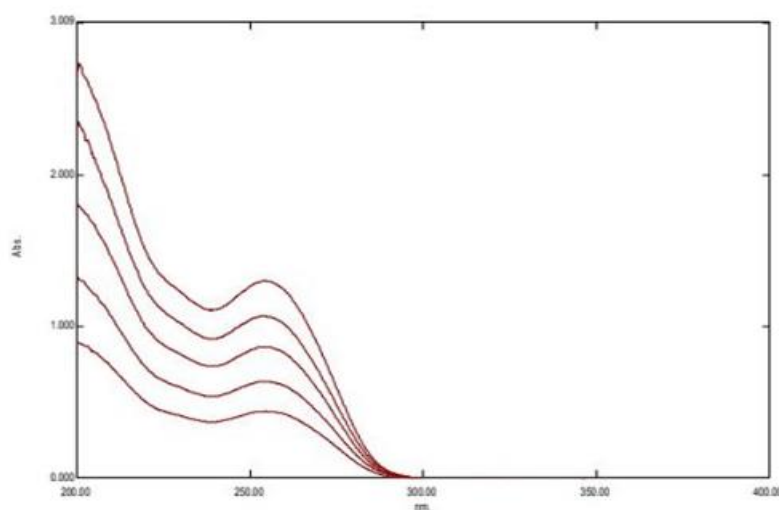


Fig. 13: Zero order spectra of different concentration of OLME (10-30 $\mu\text{g/mL}$) obtained after subtraction of recovered AZE spectra.

Method 3: Ratio Subtraction Coupled with Spectrum Subtraction (Rs-Ss)^[33-35]

This spectrophotometric method is applied to binary mixtures of OLME and AZE, where AZE has a more extended spectrum. The λ_{max} of OLME and AZE were measured at 255 nm and 258.8 nm, respectively, in a 70:30 water–methanol mixture.

OLME is determined using the ratio subtraction approach as mentioned

For determination of AZE,

Step 1: $(OLME + AZE) - OLME(\text{Recovered Spectra}) = AZE$

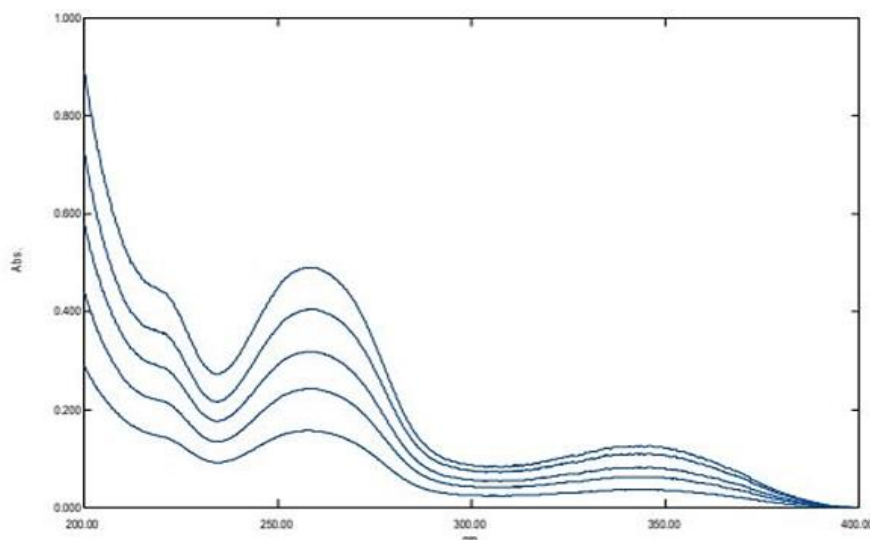


Fig. 14: zero order spectra of different concentration of AZE (4-12 μ g/mL) obtained after subtraction of recovered OLME spectra by the RS method.

METHOD 4: ABSORPTION FACTOR METHOD (AFM)^[34-35]

This method is used for the spectroscopic analysis of a binary mixture of OLME and AZE with overlapping spectra. AZE interferes at the maximum absorption wavelength of OLME (λ_1), while OLME does not interfere at another wavelength (λ_2). The absorption factor of AZE is calculated as the ratio of its absorbance at λ_1 to that at λ_2 . Since the absorbance of the mixture (OLME + AZE) at λ_2 is equal to that of pure AZE, due to the absence of OLME interference at this wavelength, the absorbance of OLME at λ_1 can be calculated using the following equation:

Absorption value of OLME at λ_1

$$= \text{Abs } \lambda_1(\text{OLME} + \text{AZE}) - \frac{\text{Abs}_1}{\text{Abs}_2} \times \text{Abs}(\text{OLME} + \text{AZE})$$

Where, $\frac{\text{Abs}_1}{\text{Abs}_2}$ is absorption factor of pure AZE (Abs at λ_1 / Abs at λ_2)

Absorbance λ_1 is absorbance of the mixture of (OLME+AZE) at λ_1

Absorbance λ_2 is absorbance of the mixture of (OLME+AZE) at λ_2

The concentrations of OLME and AZE are then calculated using their respective calibration curves obtained by plotting absorbance at λ_1 and λ_2 against concentration.

ANALYSIS OF TABLET FORMULATION

Twenty 'Olmezest AZ-20' tablets were precisely weighed and the average tablet weight was calculated. A powdered sample equivalent to 8 mg of AZE (containing 20 mg of OLME) was transferred into 100 mL volumetric flask, followed by extraction using sonication for 20 min in 50 mL methanol. The volume was then made up to the mark with methanol to obtain a final concentration of 80 $\mu\text{g/mL}$ of AZE and 200 $\mu\text{g/mL}$ of OLME. The solution was centrifuged, and the clear supernatant was collected for further analysis.

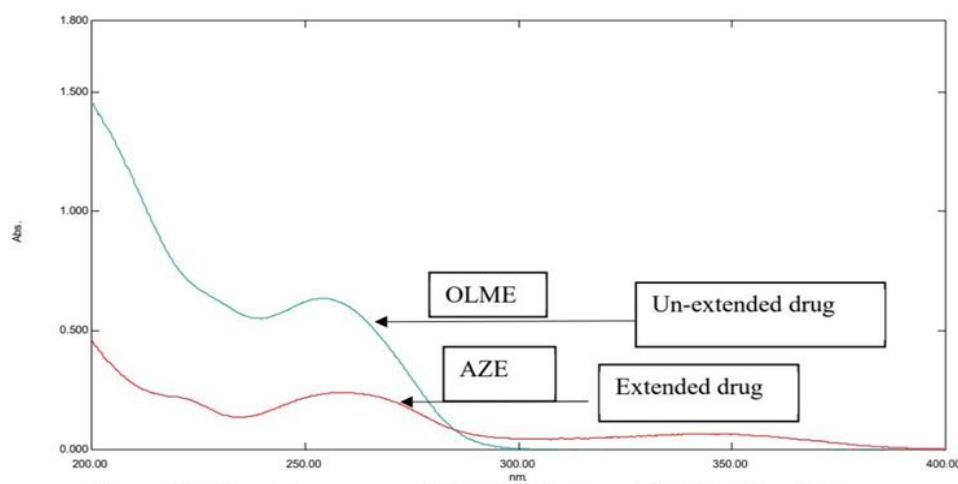


Fig. No.15: Overlain spectra of AZE (8 $\mu\text{g/mL}$) and OLME (20 $\mu\text{g/mL}$).

ANALYTICAL METHOD VALIDATION

As per the ICH guideline Q2 (R2), the developed analytical method was validated by assessing key parameters, including linearity and range, specificity, precision, accuracy, and assay.

RESULTS AND DISCUSSION

Standard solutions of OLME (20 $\mu\text{g/mL}$) and AZE (8 $\mu\text{g/mL}$) were scanned between 200 and 400 nm using a UV spectrophotometer. The absorbance maxima for OLME and AZE were found to be 255 nm and 258.8 nm, respectively, and were used for the RS-ERS, RS-CM, and RS-SS methods, while for the AFM method, absorbance maxima for OLME and AZE were measured at 255 nm and 342.2 nm, respectively.

VALIDATION STUDIES OF THE DEVELOPED ANALYTICAL METHOD

SPECIFICITY

Specificity was confirmed for all four methods (RS-ERS, RS-SS, RS-CM, and AFM) for AZE and OLME at 8 $\mu\text{g/mL}$ and 20 $\mu\text{g/mL}$, respectively. The spectral analysis showed that the spectra obtained from the marketed formulation closely overlapped with the spectra obtained from the lab-prepared AZE and OLME mixture, indicating minimal interference. Moreover, the excipients used in tablet formulation did not negatively affect spectral properties.

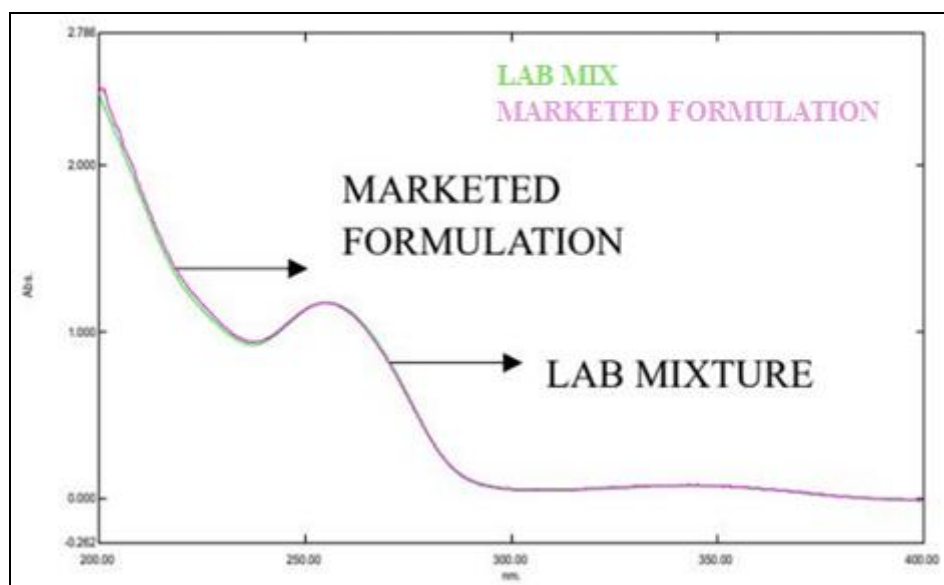


Fig. 16: Overlaid spectra of laboratory prepared mixture and tablet formulation of AZE (8 $\mu\text{g/mL}$) OLME (20 $\mu\text{g/mL}$) for RS-ERS, RS-CM, RS-SS and AFM method.

LINEARITY

The linearity of AZE and OLME was evaluated across specific concentration ranges. Five different concentrations were prepared: 4-12 $\mu\text{g/mL}$ (4, 6, 8, 10, 12) for AZE and 10-30 $\mu\text{g/mL}$ (10, 15, 20, 25, 30) for OLME. Spectral data were recorded using a UV-Visible spectrophotometer within the 200-400 nm range.

For RS-ERS, RS-CM and RS-SS methods, absorbance of AZE and OLME was measured at 258.8 nm and 255 nm, respectively. For AFM, AZE and OLME was measured 342.2 nm and 255 nm, respectively. Calibration curves were constructed by plotting absorbance against concentration, and the regression equation was determined for all methods.

Table 1: Linearity Study Of Aze And Olme For Rs-Res, Rs-Cm And Rs-Ss.

| Parameter | AZE | OLME |
|----------------------------------|--------------------|----------------------|
| Linearity range | 4-12 µg/mL | 10-30 µg/mL |
| Regression equation | $y=0.0418x-0.0103$ | $y = 0.0434x-0.0071$ |
| Coefficient of correlation R^2 | 0.9997 | 0.9995 |
| Slope | 0.0418 | 0.0434 |
| Intercept | -0.0103 | -0.0071 |

Table 2: linearity Study for Aze and Olme for afm Method.

| Parameter | AZE | OLME |
|----------------------------------|--------------------|----------------------|
| Linearity range | 4-12 µg/mL | 10-30 µg/mL |
| Regression equation | $y=0.0112x-0.0051$ | $y = 0.0434x-0.0052$ |
| Coefficient of correlation R^2 | 0.9992 | 0.9996 |
| Slope | 0.0112 | 0.0434 |
| Intercept | -0.0051 | -0.0052 |

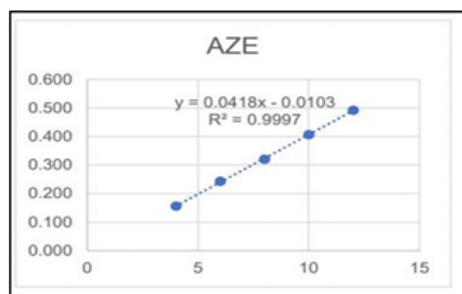


Fig. 17: Calibration curve of AZE for RS-ERS, RS-CM and RS-SS

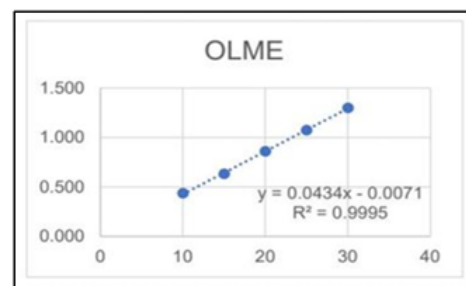


Fig. 18: Calibration curve of OLME for RS-ERS, RS-CM and RS-SS

PRECISION

Intra-day and inter-day precision at the assay concentration level (AZE 8 µg/mL and OLME 20 µg/mL) was assessed for all four methods (RS-ERS, RS-CM, RS-SS, and AFM). For RS-ERS, RS-CM, and RS-SS, AZE was evaluated using OLME (20 µg/mL) as a divisor at 258.8 nm, whereas OLME was determined using AZE (8 µg/mL) as a divisor at 255 nm. In the AFM method, AZE and OLME were directly measured at 342.2 nm and 255 nm, respectively. The percentage relative standard deviation (%RSD) for both compounds was found to be below 2%, confirming the reliability and accuracy of the methods. The results are summarized in the table below.

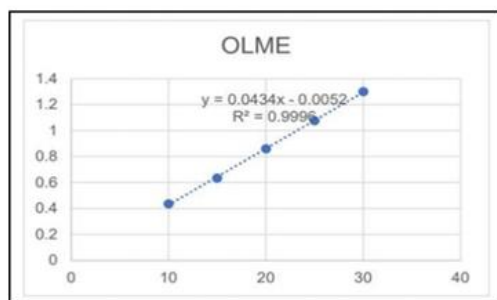


Fig. 19: Calibration curve of OLME for AFM method

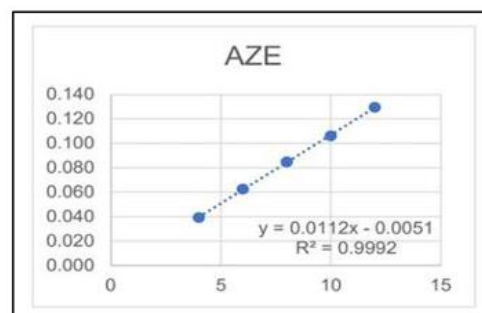


Fig. 20: Calibration curve of AZE for AFM method

Table 3: Precision Study of Aze and Olme.

| Method | Parameters | AZE | | OLME | |
|--------|------------|----------------|-------|----------------|-------|
| | | Mean Abs. ± SD | %RSD | Mean Abs. ± SD | %RSD |
| RS-ERS | Intra-day | 7.962 ± 0.067 | 0.836 | 20.060 ± 0.066 | 0.331 |
| | Inter-day | 7.946 ± 0.079 | 0.997 | 19.995 ± 0.161 | 0.807 |
| RS-CM | Intra-day | 8.010 ± 0.045 | 0.559 | 20.002 ± 0.132 | 0.660 |
| | Inter-day | 7.970 ± 0.076 | 0.957 | 19.964 ± 0.182 | 0.911 |
| RS-SS | Intra-day | 7.962 ± 0.066 | 0.926 | 20.060 ± 0.066 | 0.331 |
| | Inter-day | 7.934 ± 0.094 | 1.186 | 19.995 ± 0.161 | 0.807 |
| AFM | Intra-day | 7.969 ± 0.068 | 0.913 | 20.041 ± 0.101 | 0.502 |
| | Inter-day | 7.940 ± 0.131 | 1.655 | 20.025 ± 0.126 | 0.630 |

ACCURACY

The accuracy of the proposed method was evaluated using the standard addition technique at 80%, 100%, and 120% of the assay concentration for both AZE and OLME. Standard additions from working solutions (100 µg/mL) were made to achieve the desired concentration levels. In the RS-ERS, RS-CM, and RS-SS methods, OLME was quantified using AZE (8 µg/mL) as the divisor at 255nm, while AZE was determined using OLME (20 µg/mL) as the divisor at 258.8nm. For the AFM method, AZE and OLME were measured at 342.2 nm and 255 nm, respectively. The recoveries were calculated in triplicate, and the result were found to be within 98–102% with %RSD values below 2%, which confirms the accuracy of the method.

Table 4: Accuracy Study of Aze and Olme For Rs-Ers and Rs-Cm Method.

| Parameters | Acceptance criteria | Method | | | |
|--|---------------------|-------------|-------------|--------------|---------------|
| | | RS-ERS | | RS-CM | |
| (n=3) Recovery (%): Mean ± SD, RSD (%) | | | | | |
| | | AZE | OLME | AZE | OLME |
| 80% | 98 – 102% | 99.958±0.01 | 101.125±0.0 | 99.958±0.01, | 101.125±0.047 |

| | | | | | |
|------|-----------|----------------------|---------------------|---------------------|---------------------|
| | | 0, 0.328 | 47, 0.058 | 0.328 | , 0.058 |
| 100% | 98 – 102% | 99.958±0.029, 0.751 | 98.566±0.057, 0.579 | 99.958±0.029, 0.751 | 98.566±0.057, 0.579 |
| 120% | 98 – 102% | 100.138±0.020, 0.427 | 99.944±0.023, 0.239 | 101.25±0.033, 0.150 | 99.583±0.108, 0.907 |

Table 5: Accuracy Study of aze and olme for rs-ss and afm method.

| Parameters | Acceptance criteria | Method | | | |
|------------|---------------------|--|----------------------|----------------------|---------------------|
| | | RS-SS | | AFM | |
| | | (n=3) Recovery (%): Mean ± SD, RSD (%) | | | |
| | | AZE | OLME | AZE | OLME |
| 80% | 98 – 102% | 99.958±0.328, 1.482 | 101.125±0.047, 0.058 | 101.100±0.004, 0.145 | 98.980±0.058, 0.058 |
| 100% | 98 – 102% | 99.080±0.057, 1.457 | 100.677±0.057, 0.567 | 99.410±0.037, 0.940 | 99.060±0.037, 0.377 |
| 120% | 98 – 102% | 100.138±0.049, 1.016 | 99.972±0.028, 0.239 | 100.800±0.081, 1.686 | 99.194±0.089, 0.752 |

ASSAY

The assay was performed by diluting the tablet sample solution to achieve final concentrations of AZE (8 µg/mL) and OLME (20 µg/mL) using a 70:30 v/v mixture of distilled water and methanol. The prepared solution was then scanned over the 200–400 nm range using a UV-visible spectrophotometer.

In the RS-ERS, RS-CM and RS-SS methods, OLME was measured at 255 nm with AZE (8µg/mL) as the divisor, whereas AZE was determined at 258.8 nm using OLME (20 µg/mL) as the divisor. For the AFM method, AZE and OLME were quantified at 342.2 nm and 255 nm, respectively. All measurements were carried out in triplicate, and the percent relative standard deviation (%RSD) was calculated to confirm the consistency of the results. The validated RS-ERS, RS-CM and RS-SS method was successfully applied for the simultaneous estimation of AZE and OLME in a marketed formulation.

Table 6: Assay Study Of Aze And Olme For Rs-Ers, Rs-Cm, Rs-Ss And Afm Method.

| Method | Parameter | Acceptance criteria | AZE | OLME |
|--------|-----------|-----------------------------|----------------|-----------------|
| | Assay | (n=3) | Average ± SD | |
| RS-ERS | % Content | AZE 90-110% OLME 90-110% | 99.378 ± 0.813 | 100.156 ± 0.290 |
| RS-CM | | | 100.617± 0.309 | 99.651± 0.533 |
| RS-SS | | | 99.896±1.285 | 100.231±0.420 |
| AFM | | | 100.619± 1.611 | 100.565±0.854 |

GREENNESS ASSESSMENT

These methods were evaluated for their greenness using two greenness evaluation tools, namely, Agree and complex Gapi.

AGREE

RS-ERS, RS-CM, RS-SS, and AFM successfully met the sustainability criteria, achieving a central score of 0.68 as illustrated in Fig.21

COMPLEX GAPI (COMPLEMENTARY GREEN ANALYTICAL PROCEDURE INDEX)

RS-ERS, RS-CM, RS-SS, and AFM achieved an E-factor of 0.02, achieving confirming their compliance with green chemistry standards as illustrated in Fig.22



Fig. 21 Greenness Assessment by AGREE

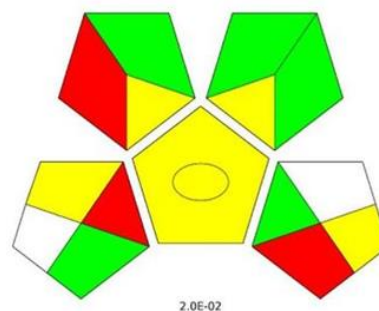


Fig. 22 Greenness Assessment by Complex GAPI

This systematic evaluation ensures environmentally responsible analytical methodologies while maintaining their efficiency and scientific integrity.

CONCLUSION

Four new UV spectrophotometric methods were developed for the quantification of AZE and OLME in a fixed-dose combination. The results complied with the label claims and provided an alternative method for the accurate determination of these drugs in fixed-dose combination. The developed methodologies effectively address the challenge of quantifying target components in pharmaceutical formulations, even in the presence of interfering components. Compared to other analytical techniques, such as chromatography, these spectrophotometric methods offer a simpler, cost-effective, and reliable alternative that does not require extensive sample preparation or high-end instrumentation.

ACKNOWLEDGEMENT

I sincerely express my gratitude to all those who supported and guided me during this research journey. I am foremost thankful to the Almighty for the strength, wisdom, and good health that enabled me to complete this study. My heartfelt appreciation goes to my parents for their constant encouragement and to my sister for being a consistent source of motivation. I am grateful to Dr. Gopal Krishna Rao, Principal of the, Goa College of Pharmacy, for providing the infrastructure and resources necessary for this study. My sincere thanks to Dr. Sanjay Pai, Professor and Head, Department of Pharmaceutical Chemistry, for his valuable insights and encouragement. I am especially indebted to my guide, Dr. Sachi Kudchadkar, Assistant Professor, Department of Pharmaceutical Analysis, for her dedicated guidance and constructive feedback throughout the project.

I also acknowledge with thanks the support and suggestions of Dr. Anand Avinash Mahajan, Dr. Adison Fernandes, and Mrs. Shweta Borkar from the Department of Pharmaceutical Analysis.

REFERENCES

1. Indian Pharmacopoeia Commission. Indian Pharmacopoeia. Ghaziabad; Indian Pharmacopoeia Commission: 2018; 2: 1304–1305.
2. Indian Pharmacopoeia Commission. Indian Pharmacopoeia. Ghaziabad; Indian Pharmacopoeia Commission: 2018; 3: 2775–2776.
3. National Center for Biotechnology Information. PubChem Compound Summary for CID 65948, Azelnidipine. <https://pubchem.ncbi.nlm.nih.gov/compound/Azelnidipine>.
4. National Center for Biotechnology Information. PubChem Compound Summary for CID 130881, Olmesartan medoxomil. <https://pubchem.ncbi.nlm.nih.gov/compound/Olmesartan-Medoxomil>.
5. Mukeri IH, Kushwaha AK, Neupane NP, Kumar A, Sushant A, Nag A, Malairajan P. Analytical method development and validation of azelnidipine by UV-visible spectroscopy. *World J. Pharm. Res.*, 2021; 10(10): 858-872.
6. Rele RV, Patil SP. Ultraviolet spectrophotometric method for estimation of azelnidipine from bulk drug and pharmaceutical formulation. *Asian J. Res. Chem.*, 2011; 3(4): 1077-1079.

7. Rele RV. Spectrophotometric estimation of azelnidipine in bulk and pharmaceutical dosage form by second order derivative method. *J Chem. Pharm. Res.*, 2014; 6(8): 198–202.
8. Raskapur KD, Patel MM, Captain AD. UV spectrophotometric method development and validation for determination of azelnidipine in pharmaceutical dosage form. *Int. J. Pharm. Sci. Rev. Res.*, 2022; 75(2): 168-173.
9. Prabhakar D, Sreekanth J, Jayaveera KN. Method development and validation of azelnidipine by RP-HPLC. *Int. J. Chem. Tech. Res.*, 2017; 10(10): 418-23.
10. Puneekar AD, Waghmare SA, Puneekar AS. Analytical method development and validation for the estimation of azelnidipine in bulk drug and pharmaceutical dosage form. *Int. J. Pharm. Sci.*, 2012; 4(2): 398–401.
11. Kawabata K, Urasaki Y. Simultaneous determination of azelnidipine and two metabolites in human plasma using liquid chromatography–tandem mass spectrometry. *J Chromatogr B Analyt Technol Biomed Life Sci.*, 2006 Nov 21; 844(1): 45-52.
12. Guduru SK, Dasari PK. Method development, validation and stability indicating studies of olmesartan medoxomil in bulk and pharmaceutical dosage form by UV spectroscopy. *Int. J. Pharm. Sci.*, 2011; 3(2): 245–9.
13. Vijayakumari M, Prasadbabu K, Lakshmi Prasanna K, Sowjanya P, Prathap M. A new method development and validation for quantitative estimation of olmesartan medoxomil in pharmaceutical dosage form by UV spectrophotometry. *Sch. Acad. J. Pharm.*, 2013; 2(4): 312-5.
14. Shriram NB, Swapnil JD, Manish BS, Sujata MJ. Novel spectrophotometric method for estimation of olmesartan medoxomil from its tablet dosage form using hydrotropic solubilization. *Ars. Pharm.*, 2013; 54(3): 8–11.
15. Patel J, Kevin G, Patel A, Raval M, Sheth N. Development of the UV spectrophotometric method of olmesartan medoxomil in bulk drug and pharmaceutical formulation and stress degradation studies. *Pharm Methods*. 2011; 2(1): 36–41.
16. Sharma T, Si SC, Gowrishankar D. Difference spectrophotometric method for the determination of olmesartan medoxomil in tablets. *J. Pharm. Res.*, 2010; 3(3): 1553-1555.
17. Sharma RN, Pancholi SS. RP-HPLC-DAD method for determination of olmesartan medoxomil in bulk and tablets exposed to forced conditions. *Acta. Pharm.*, 2010; 60(1): 13-24.

18. Kushwaha A, Nagarajan K, Goel R, Kapoor G, Bhardwaj S, Bhatt P. Method development and validation of olmesartan medoxomil by using RP-HPLC. *Int. J. Pharm. Investig.* 2025; 15(3): 1–12.
19. Hamrapurkar PD, Gadapayale KK. Optimization and validation of RP-HPLC stability indicating method for determination of olmesartan medoxomil and its degraded product. *Int. J. Appl. Sci. Eng.*, 2013; 11(2): 137-147.
20. Patel N, Patel J. Simultaneous determination of azelnidipine and olmesartan medoxomil by first derivative spectrophotometric method. *Der. Pharm. Lett.*, 2012; 4(4): 1080–1084.
21. Meshram A, Parihar AS. Green analytical spectrophotometric method development of azelnidipine and olmesartan medoxomil by using mixed hydrotropic solubilization. *Adv. Biores.*, 2025; 16(2): 1–7.
22. Attimarad M, Chohan MS, Narayanaswamy VK, Nair AB, Sreeharsha N, Shafi S, et al. Mathematically processed UV spectroscopic method for quantification of chlorthalidone and azelnidipine in bulk and formulation: evaluation of greenness and whiteness. *J Spectrosc.* 2022; 2022(3S): 1-13.
23. Suthar P, Mashru R. Advanced UV spectrophotometric method development and validation for simultaneous estimation of azelnidipine and telmisartan in pharmaceutical dosage form. *Indian J Pharm Drugs Stud.*, 2023; 2(1): 128–34.
24. Patel JK, Patel NK. Validated stability-indicating RP-HPLC method for the simultaneous determination of azelnidipine and olmesartan in their combined dosage form. *Sci. Pharm.*, 2014; 82(3): 541–53.
25. Somwanshi SD, Gawale ST, Pawar NM, Pingle AP, Dumbare MR. Development and validation of RP-HPLC method for simultaneous estimation of azelnidipine and olmesartan medoxomil. *Int. J. Res. Anal. Rev.*, 2025; 12(1): 426-435.
26. Bhosale AP, Pingle AP. Bioanalytical RP-HPLC method development and validation for estimation of azelnidipine and olmesartan medoxomil in human plasma. *J. Med. Pharm. Allied. Sci.*, 2020; 9(4): 5232–5239.
27. Jiffy M, Haripriya M. Quantitative analysis of azelnidipine and olmesartan medoxomil by high-performance thin-layer chromatography with UV absorption densitometric detection. *Int. J. Pharm. Res.*, 2024; 30(6): 276-287.
28. Adepu R, Neelima B, Pallapothu LMK, Kumar AA. A novel method for the simultaneous determination of azelnidipine and olmesartan in human plasma by using liquid chromatography–electrospray ionization tandem mass spectrometry and application to a pharmacokinetic study. *Int. J. Pharm.*, 2017; 7(3): 111-124.

29. Thakker N, Shinde G, Dharamsi A, Choudhari V, Pawar S. Development and validation of bioanalytical method for simultaneous estimation of olmesartan medoxomil and metoprolol succinate by UHPLC–MS/MS in human plasma. *Research J. Pharm. and Tech.*, 2022; 15(7): 2909-2916.
30. Vaidya VV, Roy SM, Yetal SM, Joshi SS, Parekh SA. LC-MS-MS determination of olmesartan in human plasma. *Chromatographia*. 2022; 67(1): 147–50.
31. Sebaiy MM, Mattar AA. Ratio subtraction coupled with extended ratio subtraction method for simultaneous determination of paracetamol and orphenadrine citrate in their combined pharmaceutical dosage forms. *Int. J. Mod. Pharm. Res.*, 2020; 4(1): 40-44
32. Arid JF, Essam HM, Mostafa NM, Fayez YM. Spectral manipulation of ratio data for simultaneous determination of binary mixture of paracetamol and phenylephrine hydrochloride. *Spectrochim Acta A. Mol. Biomol. Spectrosc.*, 2021; 260: 119894..
33. Mohammad MA, Mahrouse MA, Amer EA, Elharati NS. Simultaneous determination of enalapril maleate and nitrendipine in tablets using spectrophotometric methods manipulating ratio spectra. *Spectrochim Acta A. Mol. Biomol. Spectrosc.*, 2021; 244: 118-894.
34. Malathi DS, Pallavi M, Sunil Kumar. *Instrumental Methods of Analysis (English Edition)*. Lucknow: Thakur Publication Pvt Ltd; 2020.
35. Kamal AH, El-Malla SF, Hammad SF. A review on UV spectrophotometric methods for simultaneous multicomponent analysis. *Eur. J. Pharm. Med. Res.*, 2016; 3(2): 348-365.